

# KTM

# ERSATZTEILKATALOG SPARE PARTS MANUAL

# 198/'99

(KTM 60 - BR8ECM)

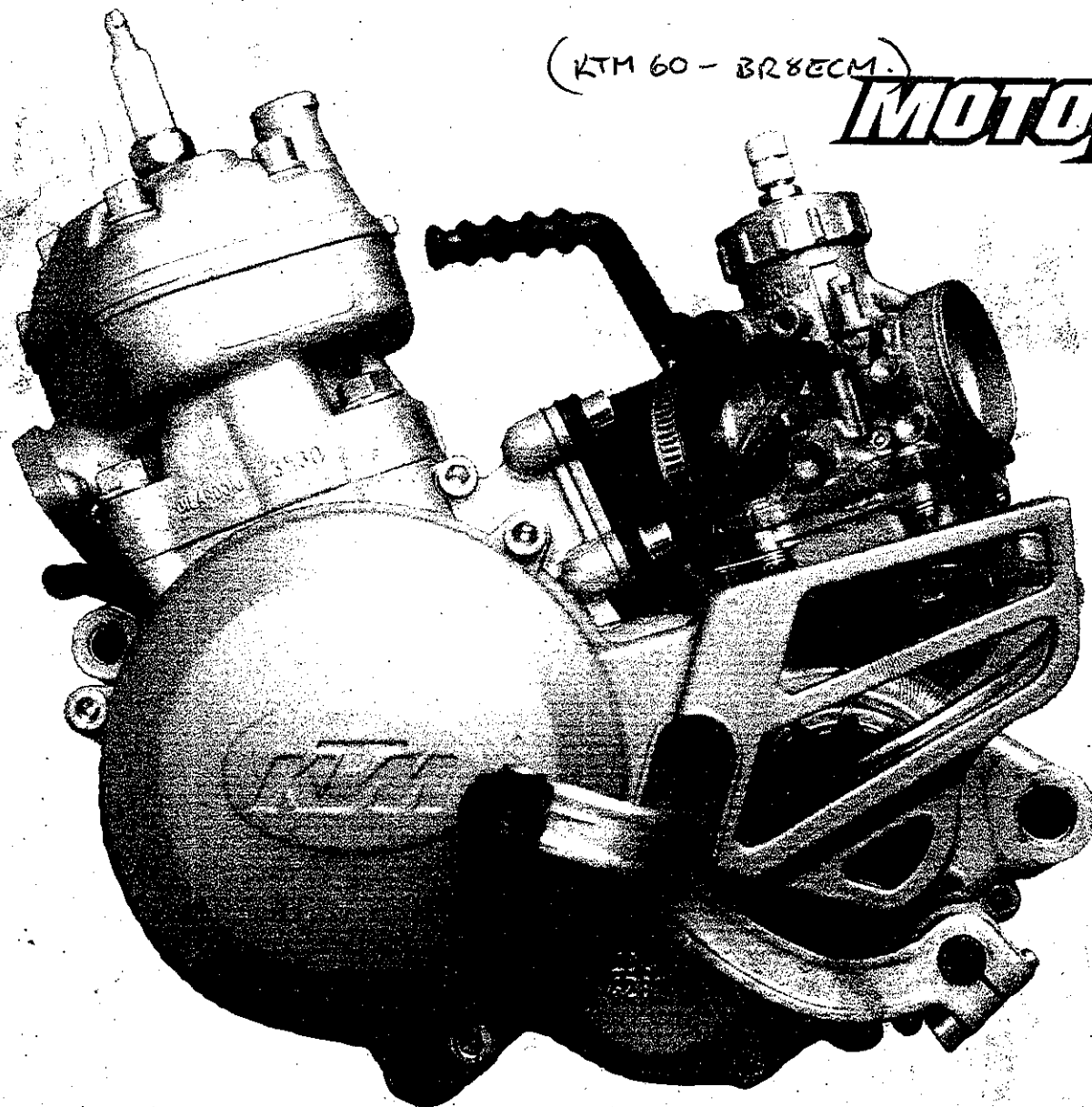
**MOTOTECH**  
MOTORCYCLE TECHNOLOGY

# MOTOR ENGINE

# 60/65 SX

TECHNISCHE DATEN  
TECHNICAL DATA

ART. NR. 3.204.61  
8.98



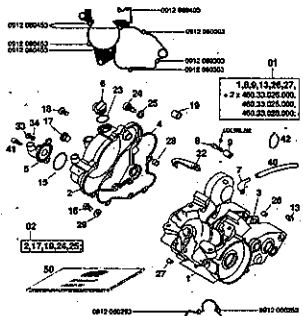


# INHALTSVERZEICHNIS

# INDEX

## MOTORGEHÄUSE I ENGINE CASE I

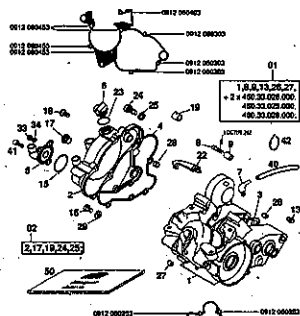
Motor Nr. / Engine No. B60 000001 - B60 000200  
Motor Nr. / Engine No. B65 000001 - B65 000210



SEITE  
Page  
**3**

## MOTORGEHÄUSE II ENGINE CASE II

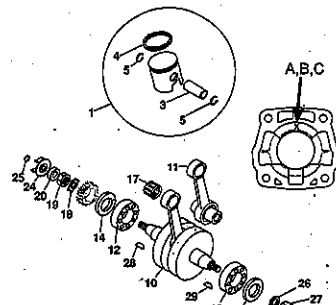
Motor Nr. / Engine No. B60 000201 →  
Motor Nr. / Engine No. B65 000211 →



SEITE  
Page  
**4**

## KURBELWELLE, KOLBEN I CRANKSHAFT, PISTON I

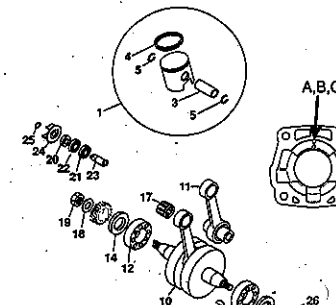
Motor Nr. / Engine No. B60 000001 - B60 000200  
Motor Nr. / Engine No. B65 000001 - B65 000210



SEITE  
Page  
**5**

## KURBELWELLE, KOLBEN II CRANKSHAFT, PISTON II

Motor Nr. / Engine No. B60 000201 →  
Motor Nr. / Engine No. B65 000211 →

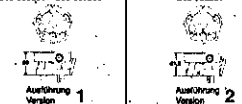


SEITE  
Page  
**6**

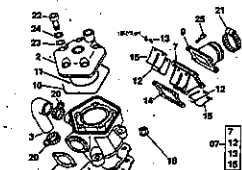
## ZYLINDER CYLINDER

Motor Nr. / Engine No. B60 000001 - B60 000450  
B65 000001 - B65 000200

Motor Nr. / Engine No. B60 000451 →  
B65 000201 →

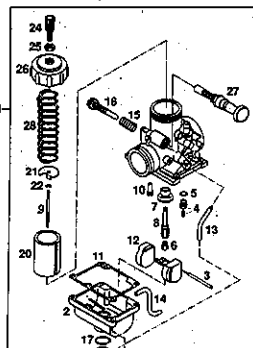


ACHTUNG! Bei Bestellung Markierung beachten.  
CAUTION! By order check marking.



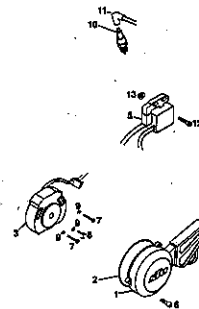
SEITE  
Page  
**7**

## VERGASER VM24-MIKUNI CARBURETOR VM24-MIKUNI



SEITE  
Page  
**8**

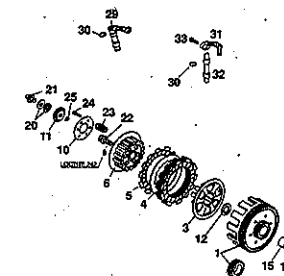
## ZÜNDANLAGE IGNITION SYSTEM



SEITE  
Page  
**9**

## KUPPLUNG I CLUTCH I

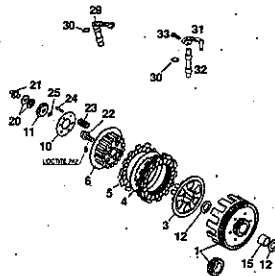
Motor Nr. / Engine No. B60 000001 - B60 000200  
Motor Nr. / Engine No. B65 000001 - B65 000210



SEITE  
Page  
**10**

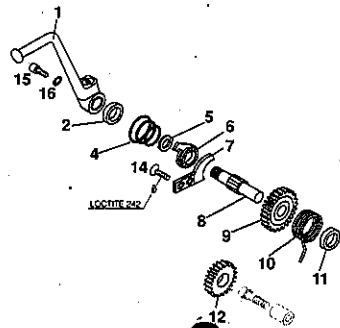
## KUPPLUNG II CLUTCH II

Motor Nr. / Engine No. B60 000201 →  
Motor Nr. / Engine No. B65 000211 →



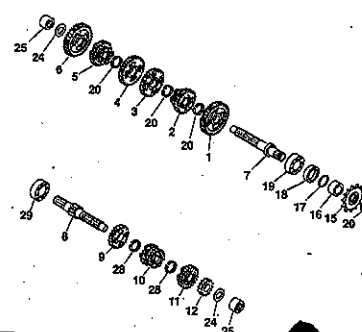
SEITE  
Page  
**11**

## KICKSTARTER KICKSTARTER



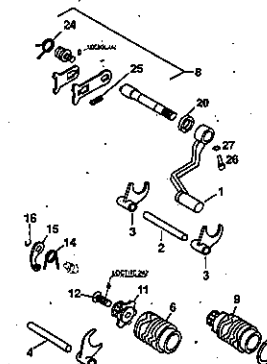
SEITE  
Page  
**12**

## GETRIEBE TRANSMISSION



SEITE  
Page  
**13**

## SCHALTUNG SHIFTING MECHANISM



SEITE  
Page  
**14**



Motor Nr. / Engine No. **B60 000001 – B60 000200**

Motor Nr. / Engine No. **B65 000001 – B65 000210**

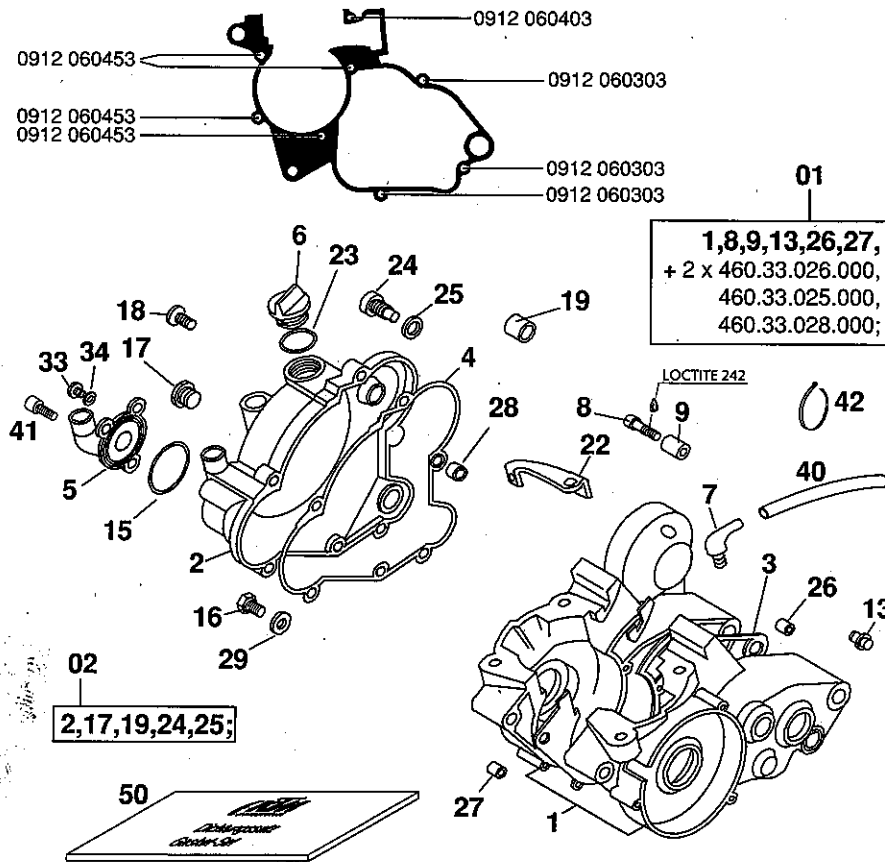


FIG	TEILNR/PARTNR	BEZEICHNUNG	DESCRIPTION	QTY
01	460.30.000.044	MOTORGEHÄUSE KPL.M.GETR.LAG'98	ENGINE CASE CPL.W.TRAN.BEAR'98	1
02	460.30.001.000	KUPPLUNGSDECKEL KPL. 60/65 '98	CLUTCH COVER CPL. 60/65 '98	1
3	460.30.039.000	MOTORGEHÄUSEDICHTUNG 60/65	ENGINE CASE GASKET 60/65	1
4	460.30.025.000	KUPPLUNGSDECKELDICHTUNG INNEN	CLUTCH COVER GASKET INSIDE	1
5	460.35.052.000	WASSERPUMPENDECKEL 60/65 '98	WATER PUMP COVER 60/65 '98	1
6	580.30.020.000	ÖLEINFÜLLSCHRAUBE M24 X 3	PLUG M24 X 3	1
7	510.30.022.000	WINKELSTÜCK 90 GRAD M10X1	ANGLE PIECE 90 DEGREE M10X1	1
15	460.35.053.000	O-RING	O-RING	1
16	460.30.021.000	ÖLABLASSSCHRAUBE M10 SW=14	OIL DRAIN PLUG M10 WS=14	1
17	460.30.095.000	SCHAUGLAS GETRIEBEÖLSTAND	INSPECTION LENS TRANSM. OIL	1
18	0991 060203	SENKSCHEIBE DIN7991-M 6X20	FLAT HEAD SCREW DIN7991-M 6X20	1
22	460.32.059.000	WIDERLAGER FÜR KUPPLUNGSSEIL	SUPPORT FOR CLUTCH CABLE	1
23	0770 160030	O-RING 16,00X3,00 NBR 70	O-RING 16,00X3,00 NBR 70	1
26	460.30.023.100	PASSHÜLSE 17X15	DOWEL 17X15	1
27	460.30.023.000	PASSHÜLSE 12X14,5	DOWEL 12X14,5	1
28	460.30.024.000	PASSHÜLSE 9X15	DOWEL 9X15	1
29	420.13.226.000	CU-DICHTRING DIN7603-10X16X1	CU-SEAL RING DIN7603-10X16X1	1
33	460.35.061.000	VERSCHLUSSSCHRAUBE M6X7	PLUG M6X7	1
34	0603 061001	CU-DICHTRING DIN7603- 6X10X1	CU-SEAL RING DIN7603- 6X10X1	1
40	310.07.007.001	PVC-SCHLAUCH 5 X 8 MM	PVC-HOSE 5 X 8 MM	0,22
41	0912 060163	ISK.SCHRAUBE DIN0912-M 6X16	AH SCREW DIN0912-M 6X16	3
42	440.11.076.100	KABELBAND 100MM	CABLE TIE 100MM	X
50	460.30.099.000	DICHTUNGSSATZ KPL. 60/65 CCM	GASKET SET CPL. 60/65 CCM	1

Motor Nr. / Engine No. **B60 000201** →

Motor Nr. / Engine No. **B65 000211** →

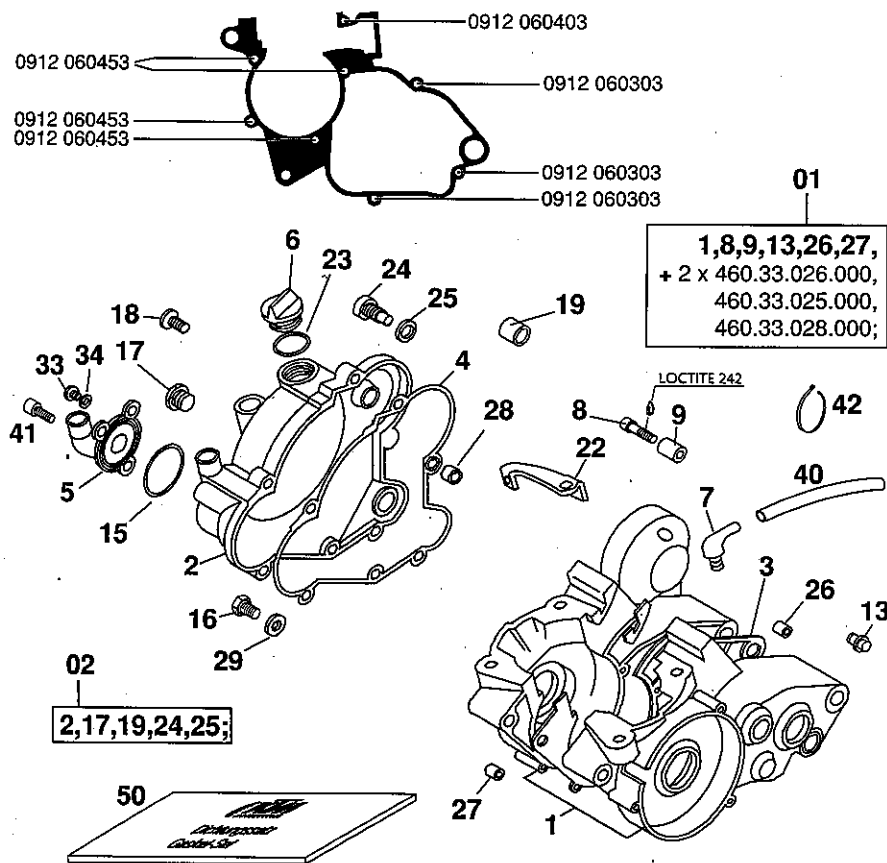


FIG	TEILNR/PARTNR	BEZEICHNUNG	DESCRIPTION	QTY
01	460.30.000.044	MOTERGEHÄUSE KPL.M.GETR.LAG'98	ENGINE CASE CPL.W.TRAN.BEAR'98	1
02*	460.30.001.100	KUPPLUNGSDECKEL KPL. 60/65 '99	CLUTCH COVER CPL. 60/65 '99	1
3	460.30.039.000	MOTERGEHÄUSEDICHTUNG 60/65	ENGINE CASE GASKET 60/65	1
4	460.30.025.000	KUPPLUNGSDECKELDICHTUNG INNEN	CLUTCH COVER GASKET INSIDE	1
5	460.35.052.000	WASSERPUMPENDECKEL 60/65 '98	WATER PUMP COVER 60/65 '98	1
6	580.30.020.000	ÖLEINFÜLLSCHRAUBE M24 X 3	PLUG M24 X 3	1
7	510.30.022.000	WINKELSTÜCK 90 GRAD M10X1	ANGLE PIECE 90 DEGREE M10X1	1
15	460.35.053.000	O-RING	O-RING	1
16	460.30.021.000	ÖLABLASSSCHRAUBE M10 SW=14	OIL DRAIN PLUG M10 WS=14	1
17	460.30.095.000	SCHAUGLAS GETRIEBEÖLSTAND	INSPECTION LENS TRANSM. OIL	1
18	0991 060203	SENKSCHRAUBE DIN7991-M 6X20	FLAT HEAD SCREW DIN7991-M 6X20	1
22	460.32.059.000	WIDERLAGER FÜR KUPPLUNGSSEIL	SUPPORT FOR CLUTCH CABLE	1
23	0770 160030	O-RING 16,00X3,00 NBR 70	O-RING 16,00X3,00 NBR 70	1
26	460.30.023.100	PASSHÜLSE 17X15	DOWEL 17X15	1
27	460.30.023.000	PASSHÜLSE 12X14,5	DOWEL 12X14,5	1
28	460.30.024.000	PASSHÜLSE 9X15	DOWEL 9X15	1
29	420.13.226.000	CU-DICHTRING DIN7603-10X16X1	CU-SEAL RING DIN7603-10X16X1	1
33	460.35.061.000	VERSCHLUSSSCHRAUBE M6X7	PLUG M6X7	1
34	0603 061001	CU-DICHTRING DIN7603- 6X10X1	CU-SEAL RING DIN7603- 6X10X1	1
40	310.07.007.001	PVC-SCHLAUCH 5 X 8 MM	PVC-HOSE 5 X 8 MM	0,22
41	0912 060163	ISK.SCHRAUBE DIN0912-M 6X16	AH SCREW DIN0912-M 6X16	3
42	440.11.076.100	KABELBAND 100MM	CABLE TIE 100MM	X
50	460.30.099.000	DICHTUNGSSATZ KPL. 60/65 CCM	GASKET SET CPL. 60/65 CCM	1

Motor Nr. / Engine No. **B60 000001 – B60 000200**

Motor Nr. / Engine No. **B65 000001 – B65 000210**

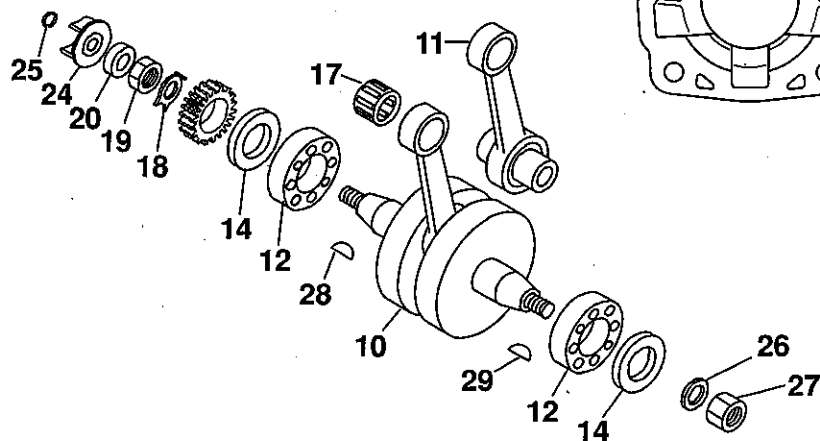
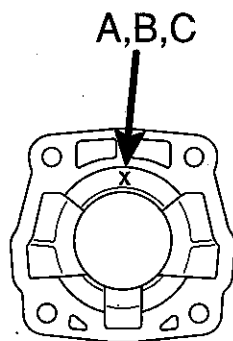
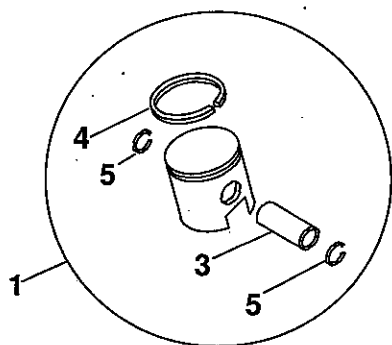


FIG	TEILNR/PARTNR	BEZEICHNUNG	DESCRIPTION	QTY
1	460.30.007.000/ A	KOLBEN KPL. 43,5MM „A“ 60'98	PISTON CPL. 43,5MM „A“ 60'98	X
1	460.30.007.000/ B	KOLBEN KPL. 43,5MM „B“ 60'98	PISTON CPL. 43,5MM „B“ 60'98	X
1	460.30.007.000/ C	KOLBEN KPL. 43,5MM „C“ 60'98	PISTON CPL. 43,5MM „C“ 60'98	X
1	460.30.007.500/ A	KOLBEN KPL. 45MM „A“ 65'98	PISTON CPL. 45MM „A“ 65'98	X
1	460.30.007.500/ B	KOLBEN KPL. 45MM „B“ 65'98	PISTON CPL. 45MM „B“ 65'98	X
1	460.30.007.500/ C	KOLBEN KPL. 45MM „C“ 65'98	PISTON CPL. 45MM „C“ 65'98	X
3	460.30.033.000	KOLBENBOLZEN 12X38	PISTON PIN 12X38	1
4	460.30.030.000	KOLBENRING 43,5MM 60CCM	PISTON RING 43,5MM 60CCM	1
4	460.30.030.500	KOLBENRING 45MM 65CCM	PISTON RING 45MM 65CCM	1
5	460.30.074.000	DRAHTSPRENGRING 12X1	CIRCLIP 12X1	2
10	460.30.018.000	KURBELWELLE KPL.HUB 40MM '98	CRANKSHAFT CPL. STROKE 40MM'98	1
11	460.30.015.000	PLEUJEL-REP.SATZ 60/65 CCM	CONN. ROD REPAIR SET 60/65 CCM	1
12	460.30.082.000	RILLENKUGELLAGER 20X52X15	GROOVED BALL BEARING 20X52X15	2
14	460.30.077.000	WELLENDICHTRING 20X35X6	SHAFT SEAL RING 20X35X6	2
17	460.30.034.000	NADELLAGER KOLBENBOLZ.12X15X17	NEEDLE BEAR.PISTONPIN 12X15X17	1
18	460.30.078.000	SICHERUNGSBLECH D=14MM	LOCKING PLATE D=14MM	1
19	460.30.029.000	SK.MUTTER 14X1,25X7 SW=22	HH NUT 14X1,25X7 WS=22	1
20	460.35.056.000	WELLENDICHTRING 10X22X7	SHAFT SEAL RING 10X22X7	1
24	460.35.055.000	WASSERPUMPENRAD 60/65 CCM	WATER PUMP WHEEL 60/65 CCM	1
25	0471 090010	SICHERUNGSRING DIN0471- 9X1	CIRCLIP DIN0471- 9X1	1
26	0127 100003	FEDERRING DIN0127-B10	SPRING RING DIN0127-B10	1
27	460.30.028.000	SK.MUTTER M10X1,25X17 SW=15	HH NUT M10X1,25X17 WS=15	1
28	0888 030050	SCHEIBENFEDER DIN6888-3X5X13	WOODRUFF KEY DIN6888-3X5X13	1
29	460.30.075.000	SCHEIBENFEDER 3X3,7X9,7	WOODRUFF KEY 3X3,7X9,7	1



Motor Nr. / Engine No. **B60 000201** →

Motor Nr. / Engine No. **B65 000211** →

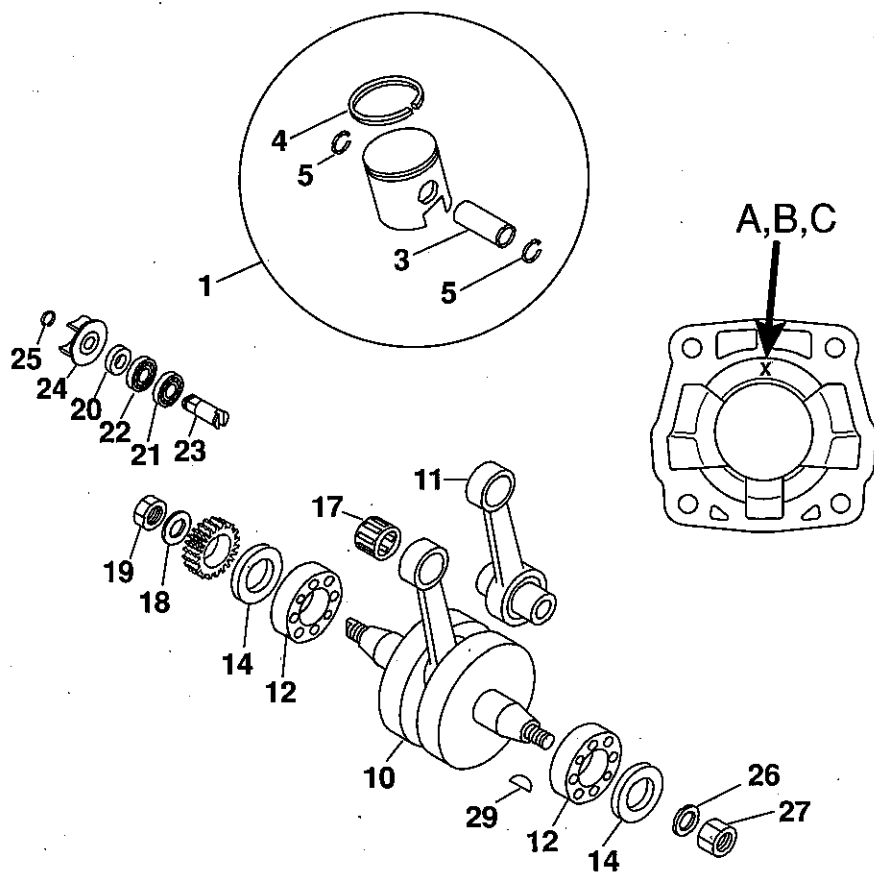
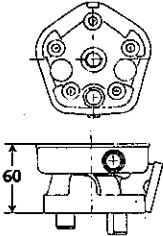


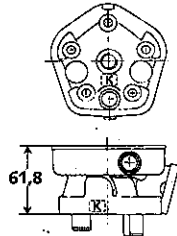
FIG	TEILNR/PARTNR	BEZEICHNUNG	DESCRIPTION	QTY
1	460.30.007.000/ A	KOLBEN KPL. 43,5MM „A“ 60'98	PISTON CPL. 43,5MM „A“ 60'98	X
1	460.30.007.000/ B	KOLBEN KPL. 43,5MM „B“ 60'98	PISTON CPL. 43,5MM „B“ 60'98	X
1	460.30.007.000/ C	KOLBEN KPL. 43,5MM „C“ 60'98	PISTON CPL. 43,5MM „C“ 60'98	X
1	460.30.007.500/ A	KOLBEN KPL. 45MM „A“ 65'98	PISTON CPL. 45MM „A“ 65'98	X
1	460.30.007.500/ B	KOLBEN KPL. 45MM „B“ 65'98	PISTON CPL. 45MM „B“ 65'98	X
1	460.30.007.500/ C	KOLBEN KPL. 45MM „C“ 65'98	PISTON CPL. 45MM „C“ 65'98	X
3	460.30.033.000	KOLBENBOLZEN 12X38	PISTON PIN 12X38	1
4	460.30.030.000	KOLBENRING 43,5MM 60CCM	PISTON RING 43,5MM 60CCM	1
4	460.30.030.500	KOLBENRING 45MM 65CCM	PISTON RING 45MM 65CCM	1
5	460.30.074.000	DRAHTSPRENGRING 12X1	CIRCLIP 12X1	2
10*	460.30.018.100	KURBELWELLE KPL.HUB 40MM '99	CRANKSHAFT CPL. STROKE 40MM'99	1
11	460.30.015.000	PLEUEL-REP.SATZ 60/65 CCM	CONN. ROD REPAIR SET 60/65 CCM	1
12	460.30.082.000	RILLENKUGELLAGER 20X52X15	GROOVED BALL BEARING 20X52X15	2
14	460.30.077.000	WELLENDICHTRING 20X35X6	SHAFT SEAL RING 20X35X6	2
17	460.30.034.000	NADELLAGER KOLBENBOLZ.12X15X17	NEEDLE BEAR.PISTONPIN 12X15X17	1
18*	460.30.078.100	SICHERUNGSSCHEIBE 14X20X1	LOCKING WASHER 14X20X1	X
19*	460.30.029.100	SK-MUTTER M14X1,25X5 '99	HH-NUT M14X1,25X5 '99	1
20*	460.35.056.100	WELLENDICHTRING 10X18X4	SHAFT SEAL RING 10X18X4	1
21*	460.35.057.000	WASSERPUMPENLAGER 10X19X5	WATER PUMP BEARING 10X19X5	1
22*	460.35.058.000	WA.PU.LAGER 10X19X5 DOPPELIP.	WA.PU.BEAR. 10X19X5 DOUBLELIP	1
23*	460.35.054.000	WASSERPUMPENWELLE 60/65 '99	WATER PUMP SHAFT 60/65 '99	1
24*	460.35.055.100	WASSERPUMPENRAD 60/65 '99	WATER PUMP WHEEL 60/65 '99	1
25	0471 090010	SICHERUNGSRING DIN0471- 9X1	CIRCLIP DIN0471- 9X1	1
26	0127 100003	FEDERRING DIN0127-B10	SPRING RING DIN0127-B10	1
27	460.30.028.000	SK.MUTTER M10X1,25X17 SW=15	HH NUT M10X1,25X17 WS=15	1
29	460.30.075.000	SCHEIBENFEDER 3X3,7X9,7	WOODRUFF KEY 3X3,7X9,7	1

Motor Nr. / Engine No.  
B60 000001 – B60 000450  
B65 000001 – B65 000200



Ausführung  
Version **1**

Motor Nr. / Engine No.  
B60 000451 →  
B65 000201 →



Ausführung  
Version **2**

**ACHTUNG !** Bei Bestellung Markierung beachten.  
**CAUTION !** By order check marking.

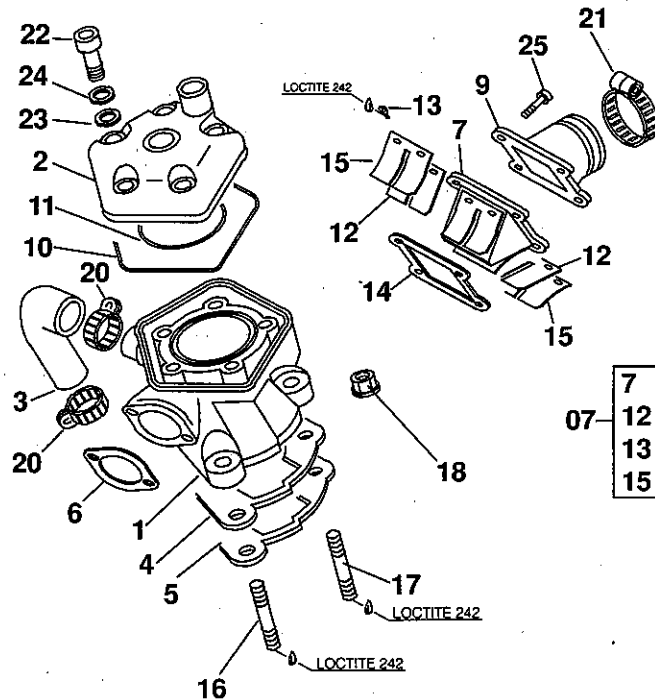


FIG	TEILNR/PARTNR	BEZEICHNUNG	DESCRIPTION	QTY
1	460.30.005.060	ZYLINDER M.KOLBEN 43,5MM 60CCM - AUSFÜHRUNG 1	CYLINDER W.PISTON 43,5MM 60CCM - VERSION 1	1
1	460.30.005.560	ZYLINDER M.KOLBEN 45MM 65CCM - AUSFÜHRUNG 1	CYLINDER W.PISTON 45MM 65CCM - VERSION 1	1
1	460.30.005.000	ZYLINDER M.KOLBEN 43,5MM „K“ 60CCM - AUSFÜHRUNG 2	CYLINDER W.PISTON 43,5MM „K“ 60CCM - VERSION 2	1
1	460.30.005.500	ZYLINDER M.KOLBEN 45MM „K“ 65CCM - AUSFÜHRUNG 2	CYLINDER W.PISTON 45MM „K“ 65CCM - VERSION 2	1
2	460.30.006.000	ZYLINDERKOPF 60CCM '98	CYLINDER HEAD 60CCM '98	1
2*	460.30.006.100	ZYLINDERKOPF „K“ 60CCM '99	CYLINDERHEAD „K“ 60CCM '99	1
2	460.30.006.500	ZYLINDERKOPF 65CCM '98	CYLINDER HEAD 65CCM '98	1
2*	460.30.006.600	ZYLINDERKOPF „K“ 65CCM '99	CYLINDERHEAD „K“ 65CCM '99	1
3	460.35.027.000	FORMSCHLAUCH ZYL.-KUPP.DECKEL	PRE-FORM.HOSE CYL.-CLUTCH COV.	1
4	460.30.035.050	ZYLINDERFUSSDICHTUNG 0,5 MM	CYLINDER BASE GASKET 0,5 MM	X
5	460.30.035.020	ZYLINDERFUSSDICHTUNG 0,2 MM	CYLINDER BASE GASKET 0,2 MM	X
6	460.30.046.000	AUSPUFFDICHTUNG 60/65 CCM	EXHAUST GASKET 60/65 CCM	1
07	460.30.051.044	MEMBRANGEHÄUSE KPL. 60/65 CCM	MEMBRANE HOUSING CPL.60/65 CCM	1
9	460.30.050.000	ANSAUGFLANSCH	INTAKE FLANGE	1
10	460.30.037.000	O-RING 94,97X1,78	O-RING 94,97X1,78	1
11	460.30.036.000	O-RING 53,7X1,78 VITON	O-RING 53,7X1,78 VITON	1
12	460.30.052.000	MEMBRAN LOSE 60/65 CCM	MEMBRANE LOOSE 60/65 CCM	2
13	0985 030063	LINSENSCHRAUBE DIN7985-M 3X6	FLAT HEAD SCREW DIN7985-M 3X6	4
14	460.30.049.000	ANSAUGFLANSCHDICHTUNG	INTAKE VALVE GASKET	1
16	460.30.043.000	STIFTSCHRAUBE M8X41	STUD M8X41	3
17	460.30.043.100	STIFTSCHRAUBE M8X44	STUD M8X44	1
18	503.30.045.000	SK-BUNDMUTTER M8 SW=12	HH COLLAR NUT M8 WS=12	4
20	100.01.020.000	SCHLAUCHKLEMME GEMI 16/27	HOSE CLAMP GEMI 16/27	2
21	310.01.027.000	SCHLAUCHBINDER 32-52MM D5	HOSE CLAMP 32-52MM D5	1
22	490.30.079.000	ISK.SCHRAUBE M 7X34,5 8,8	AH BOLT M 7X34,5 8,8	5
23	502.30.032.010	CU-DICHRING 7,3 X 12 X 0,5	CU-SEAL RING 7,3 X 12 X 0,5	5
24	0125 070003	UNTERLEGSCHIBE DIN0125-A 7,4	WASHER DIN0125-A 7,4	5
25	0912 060203	ISK.SCHRAUBE DIN0912-M 6X20	AH SCREW DIN0912-M 6X20	4



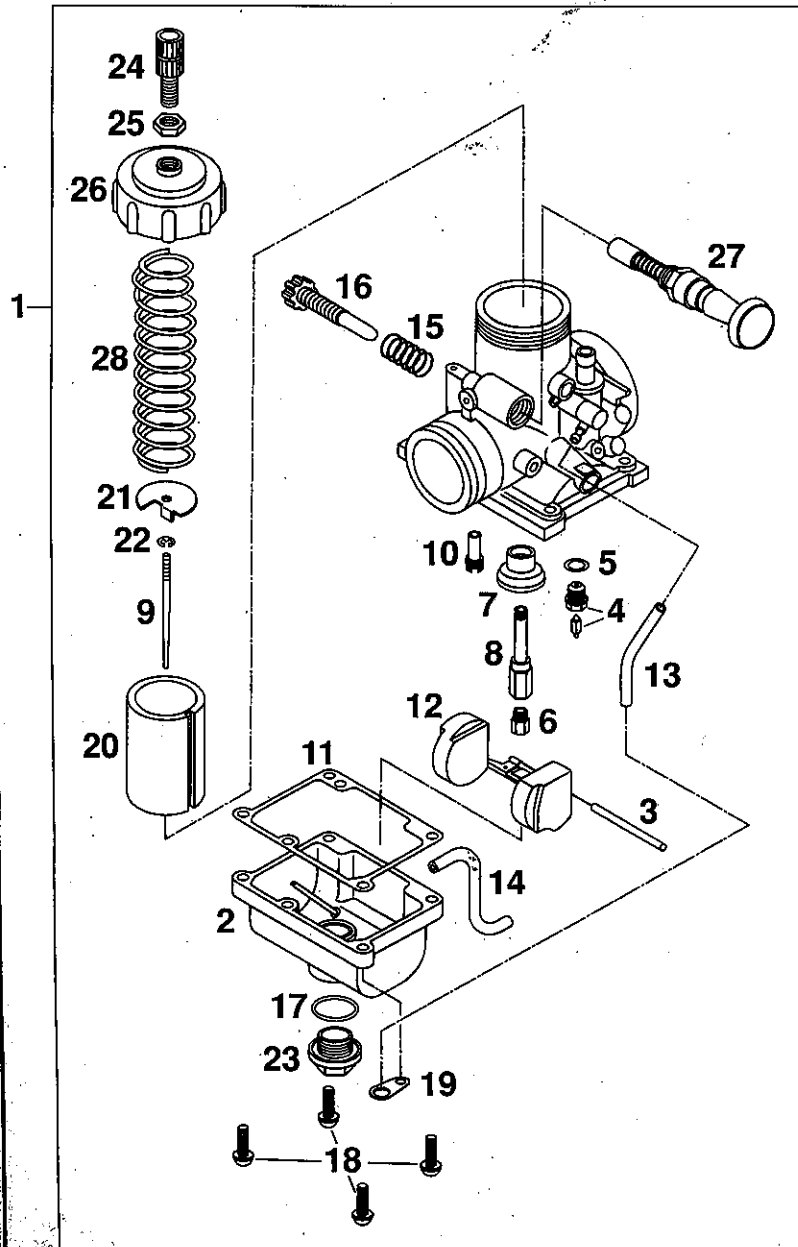
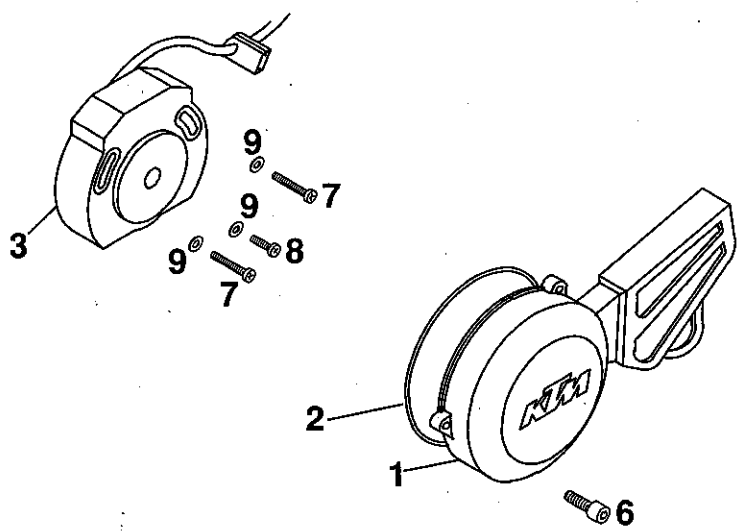
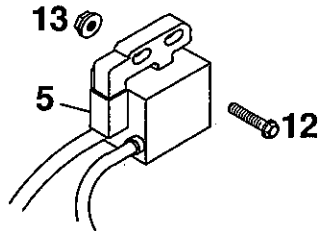
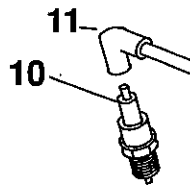


FIG	TEILNR/PARTNR	BEZEICHNUNG	DESCRIPTION	QTY
1	460.31.001.044	VERGASER MIKUNI VM24-489 65SX	CARBURETOR MIK. VM24-489 65SX	1
2	460.31.011.000	SCHWIMMERGEHÄUSE 5-1 VM24	FLOAT BODY 5-1 VM24	1
3	450.31.008.000	STIFT 2,5X27	PIN 2,5X27	1
4	460.31.020.000	SCHWIMMERNADELVENTIL KPL. VM24	NEEDLE VALVE CPL. VM24	1
5	460.31.018.000	DICHTUNG NADELVENT. 9,1X12X0,5	GASKET NEEDLE VALVE 9,1X12X0,5	1
6	450.31.023.195	HAUPTDÜSE 195	MAIN JET 195	X
6	450.31.023.200	HAUPTDÜSE 200	MAIN JET 200	1
6	450.31.023.205	HAUPTDÜSE 205	MAIN JET 205	X
7	460.31.074.000	PRALLGLOCKE	BUFFLE	1
8	460.31.021.000	NADEL DÜSE N-8	NEEDLE JET N-8	1
9	450.31.034.200	DÜSENADEL MIKUNI 5I14	JET NEEDLE MIKUNI 5I14	1
10	450.31.007.030	LEERLAUFDÜSE 30 MIKUNI	IDLING JET 30 MIKUNI	1
11	450.31.010.100	DICHTUNG SCHWIMMERGEHÄUSE	GASKET FLOAT BOWL	1
12	460.31.009.000	SCHWIMMER VM24	FLOAT VM24	1
13	520.31.137.001	PVC-SCHLAUCH 3 X 6 MM	PVC-HOSE 3 X 6 MM	0,27
14	520.31.137.001	PVC-SCHLAUCH 3 X 6 MM	PVC-HOSE 3 X 6 MM	0,14
15	450.31.015.100	FEDER MIKUNI	SPRING MIKUNI	1
16	460.31.019.000	SCHIEBERANSCHLAGSCHRAUBE M6X30	THROTTLE VALVE SCREW M6X30	1
17	460.31.043.000	O-RING 17,5X1,4	O-RING 17,5X1,4	1
18	450.31.014.000	LINSENSCHRAUBE M4X14 (SATZ)	LENTIL HEAD SCREW M4X14 (SET)	1
19	545.31.612.000	HALTER D 7	BRACKET D7	1
20	460.31.035.000	GASSCHIEBER 2.0	THROTTLE VALVE 2.0	1
21	460.31.032.000	HALTESCHEIBE	HOLDING WASHER	1
22	450.31.045.000	KLEMMFEDER	SPRING	1
23	460.31.014.000	VERSCHLUSSSCHRAUBE M16 SW=17	PLUG SCREW M16 WS=17	1
24	570.31.525.000	STELLSCHRAUBE M6X0,75	ADJUSTMENT SCREW M6X0,75	1
25	520.31.126.000	SK.MUTTER M6X0,75 DIN0439	HEXAGON NUT M6X0,75 DIN0439	1
26	460.31.027.000	VERGASERDECKEL VM24	CARBURETOR COVER VM24	1
27	460.31.048.044	KALTSTARTKNOPF KPL. VM24	COLD STARTER KNOB CPL. VM24	1
28	460.31.030.000	SCHIEBERFEDER VM24	THROTTLE VALVE SPRING VM24	1
42	440.11.076.100	KABELBAND 100MM	CABLE TIE 100MM	X

FIG	TEILNR/PARTNR	BEZEICHNUNG	DESCRIPTION	QTY
1	460.30.002.000	ZÜNDUNGSDECKEL SILBER 60/65CCM	IGNITION COVER SILVER 60/65CCM	1
2	0770 020480	O-RING 120,37X1,78 NBR70	O-RING 120,37X1,78 NBR70	1
3	460.39.002.000	ZÜNDANLAGE 60/65 CCM '98	IGNITION SYSTEM 60/65 CCM '98	1
5	460.39.006.000	ZÜNDSPULE KPL. 60/65 CCM	IGNITION COIL CPL. 60/65 CCM	1
6	0912 060203	ISK.SCHRAUBE DIN0912-M 6X20	AH SCREW DIN0912-M 6X20	3
7	0985 040353	LINSENSCHRAUBE DIN7985-M 4X35	FLAT HEAD SCREW DIN7985-M 4X35	2
8	0985 040203	LINSENSCHRAUBE DIN7985-M 4X20	FLAT HEAD SCREW DIN7985-M 4X20	1
9	0125 040003	UNTERLEGSCHLEIBE DIN0125-A 4,0	WASHER DIN0125-A 4,0	3
10	460.39.093.055	ZÜNDKERZE CHAMPION C 55	SPARKING PLUG CHAMPION C 55	1
11	545.31.010.000	KERZENSTECKER LB05EMH NGK	SPARK PLUG CAP LB05EMH NGK	1
12	0015 060303	SK.BUNDSCHRAUBE M 6X30 SW=8	HH COLLAR SCREW M 6X30 WS=8	2
13	565.09.064.000	STOVER-FLANSCHMUTTER M6	SELF LOCKING NUT M6	2



Motor Nr. / Engine No. **B60 000001 – B60 000200**

Motor Nr. / Engine No. **B65 000001 – B65 000210**

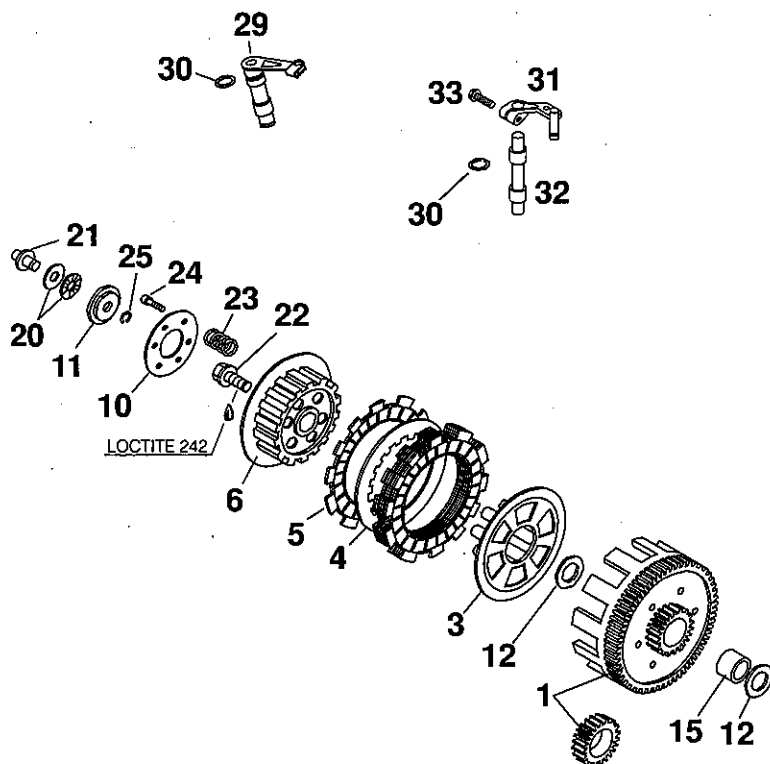


FIG	TEILNR/PARTNR	BEZEICHNUNG	DESCRIPTION	QTY
1	460.32.000.044	PRIMÄRTRIEB M.KUPP.KORB 23:75	PRIM.DRIVE W.CLUTCH HUB 23:75	1
3	460.32.003.000	DRUCKKAPPE 60/65 CCM '98	PRESSURE CAP 60/65 CCM '98	1
4	460.32.010.000	ZWISCHENLAMELLE STAHL	INTERMEDIATE DISK STEEL	7
5	460.32.011.000	BELAGLAMELLE	LINING DISK	6
6	460.32.002.000	MITNEHMER 60/65 CCM '98	INNER CLUTCH HUB 60/65 CCM '98	1
10	460.32.006.000	FEDERTELLER 25X63,5X2	SPRING RETAINER 25X63,5X2	1
11	460.32.008.000	TRÄGER FÜR AXIALLAGER	CARRIER FOR AXIAL BEARING	1
12	490.32.012.000	ANLAUFSCHIBE 17,2X30X1,5	STOP DISK 17,2X30X1,5	2
15	460.32.015.000	INNENRING 17X21X17,2	INNER RING 17X21X17,2	1
20	460.32.056.000	AXIALLAGER 6X19X2	AXIAL BEARING 6X19X2	1
21	460.32.054.000	DRUCKPILZ	PRESSURE PIECE	1
22	460.32.019.000	SK.BUNDSCHRAUBE M10X20	HH COLLAR SCREW M10X20	1
23	460.32.005.000	KUPPLUNGSFEDER	CLUTCH SPRING	6
24	0991 060203	SENKSCHRAUBE DIN7991-M 6X20	FLAT HEAD SCREW DIN7991-M 6X20	6
25	0799 060000	SICH.SCHIBE DIN6799-RS 6,0	TAB WASHER DIN6799-RS 6,0	1
29	460.32.049.000	AUSRÜCKWELLE KPL. 60/65 CCM	CLUT.RELEASE SH. KPL.60/65 CCM	1
30	460.32.051.000	O-RING 7,66X1,78	O-RING 7,66X1,78	1
31*	460.32.048.000	AUSRÜCKHEBEL KPL. 60/65 SX '99	CLUTCH RELEASE LEVER CPL. '99	1
32*	460.32.049.100	AUSRÜCKWELLE LOSE 60/65 SX '99	DISENGAGING SHAFT LOOSE '99	1
33	0015 060203	SK.BUNDSCHRAUBE M 6X20 SW=8	HH COLLAR SCREW M 6X20 WS=8	1

Motor Nr. / Engine No. **B60 000201** →  
 Motor Nr. / Engine No. **B65 000211** →

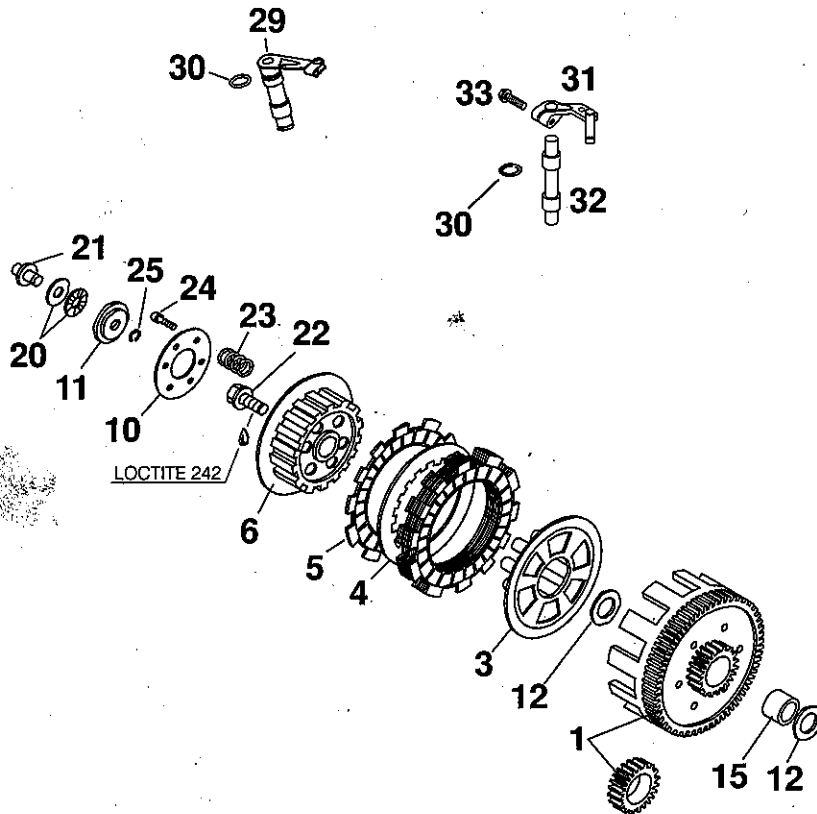


FIG	TEILNR./PARTNR	BEZEICHNUNG	DESCRIPTION	QTY
1*	460.32.000.144	PRIMÄRTR.M.KUPP.KORB 23:75 '99	PRIM.DR.W.CLUTCH HUB 23:75 '99	1
3	460.32.003.000	DRUCKKAPPE 60/65 CCM '98	PRESSURE CAP 60/65 CCM '98	1
4	460.32.010.000	ZWISCHENLAMELLE STAHL	INTERMEDIATE DISK STEEL	7
5	460.32.011.000	BELAGLAMELLE	LINING DISK	6
6	460.32.002.000	MITNEHMER 60/65 CCM '98	INNER CLUTCH HUB 60/65 CCM '98	1
10	460.32.006.000	FEDERTELLER 25X63,5X2	SPRING RETAINER 25X63,5X2	1
11	460.32.008.000	TRÄGER FÜR AXIALLAGER	CARRIER FOR AXIAL BEARING	1
12	490.32.012.000	ANLAUFSCHIBE 17,2X30X1,5	STOP DISK 17,2X30X1,5	2
15	460.32.015.000	INNENRING 17X21X17,2	INNER RING 17X21X17,2	1
20	460.32.056.000	AXIALLAGER 6X19X2	AXIAL BEARING 6X19X2	1
21	460.32.054.000	DRUCKPILZ	PRESSURE PIECE	1
22	460.32.019.000	SK.BUNDSCHRAUBE M10X20	HH COLLAR SCREW M10X20	1
23	460.32.005.000	KUPPLUNGSFEDER	CLUTCH SPRING	6
24	0991 060203	SENKSCBRAUBE DIN7991-M 6X20	FLAT HEAD SCREW DIN7991-M 6X20	6
25	0799 060000	SICH.SCHIBE DIN6799-RS 6,0	TAB WASHER DIN6799-RS 6,0	1
29	460.32.049.000	AUSRÜCKWELLE KPL. 60/65 CCM	CLUT.RELEASE SH. KPL.60/65 CCM	1
30	460.32.051.000	O-RING 7,66X1,78	O-RING 7,66X1,78	1
31*	460.32.048.000	AUSRÜCKHEBEL KPL. 60/65 SX '99	CLUTCH RELEASE LEVER CPL. '99	1
32*	460.32.049.100	AUSRÜCKWELLE LOSE 60/65 SX '99	DISENGAGING SHAFT LOOSE '99	1
33	0015 060203	SK.BUNDSCHRAUBE M 6X20 SW=8	HH COLLAR SCREW M 6X20 WS=8	1



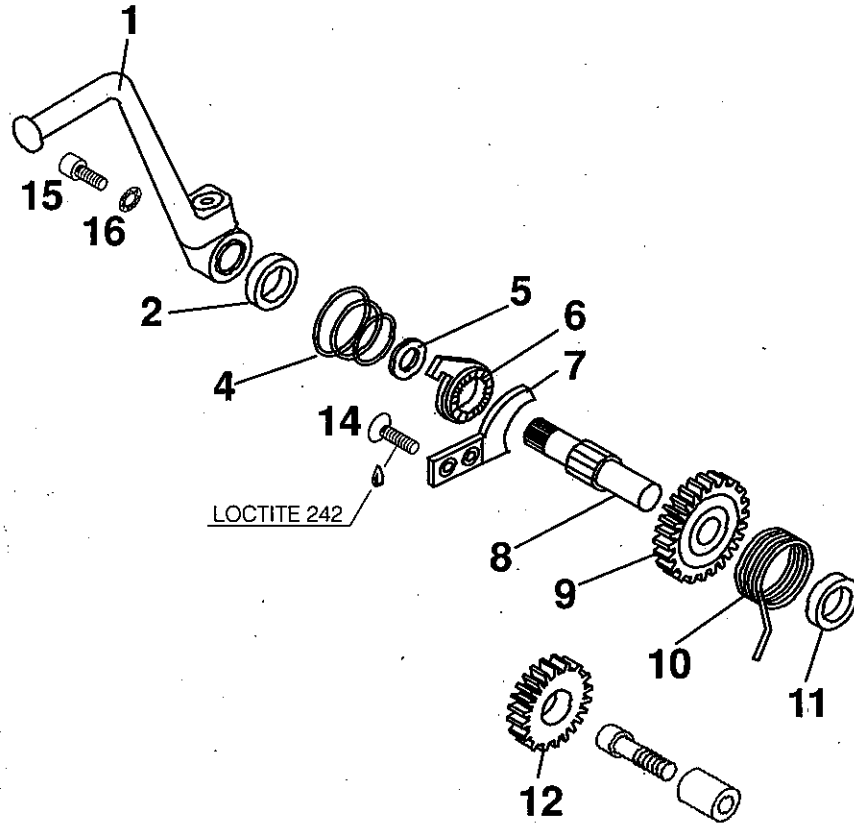


FIG	TEILNR/PARTNR	BEZEICHNUNG	DESCRIPTION	QTY
1	460.33.070.000	KICKSTARTER KPL. 60/65 CCM	KICKSTARTER CPL. 60/65 CCM	1
2	460.33.057.000	WELLENDICHTRING 14X24X7	SHAFT SEAL RING 14X24X7	1
4	460.33.056.000	SPERRADFEDER	RATCHET GEAR SPRING	1
5	490.33.031.000	ANLAUFSCHEIBE 14,3X20X1	STOP DISK 14,3X20X1	1
6	460.33.052.000	SPERRAD	RATCHET GEAR	1
7	460.33.069.000	ANSCHLAGBLECH	STOP PLATE	1
8	460.33.050.000	KICKSTARTERWELLE	KICKSTARTER SHAFT	1
9	460.33.051.000	STARTERRAD 29-Z	STARTING GEAR 29-T	1
10	460.33.054.000	KICKSTARTERFEDER	KICKSTARTER SPRING	1
11	460.33.055.000	MITNEHMERNABE	DRIVING HUB	1
12	460.33.053.000	STARTERZWISCHENRAD 18-Z	INTERMEDIATE GEAR 18-T	1
14	0991 060203	SENKSCHRAUBE DIN7991-M 6X20	FLAT HEAD SCREW DIN7991-M 6X20	2
15	0912 060163	ISK.SCHRAUBE DIN0912-M 6X16	AH SCREW DIN0912-M 6X16	1
16	0797 060003	ZAHNSCHEIBE DIN6797-J 6,4	TOOTH LOCK WASH. DIN6797-A 6,4	1

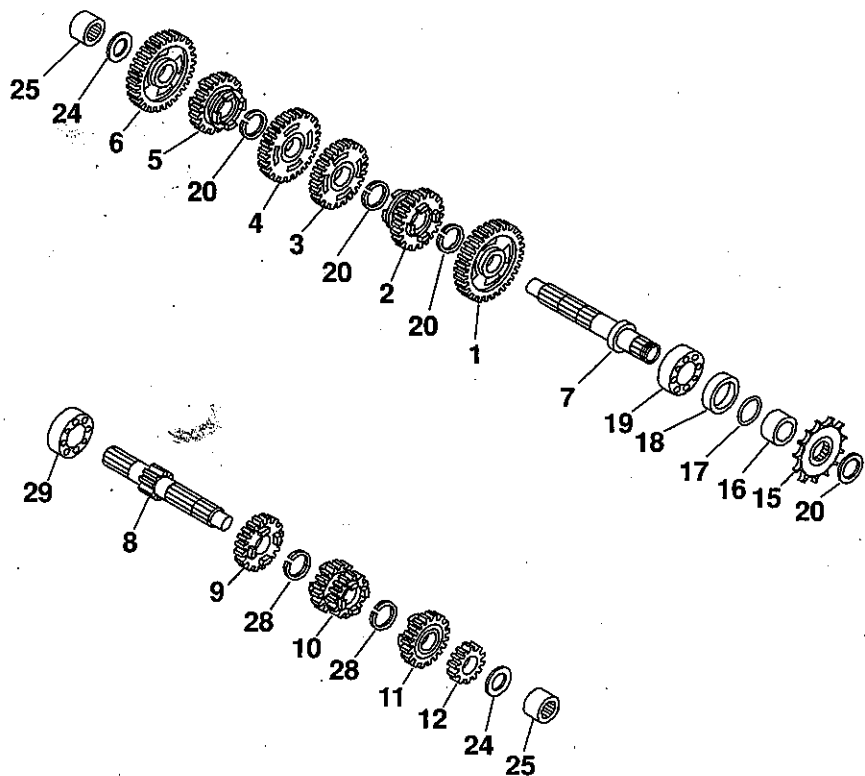


FIG	TEILNR/PARTNR	BEZEICHNUNG	DESCRIPTION	QTY
1	460.33.011.000	LOSRAD 2.GANG 34-Z	IDLER GEAR 2ND GEAR 34-T	1
2	460.33.012.000	SCHIEBERAD 6.GANG 26-Z	SLIDING GEAR 6TH GEAR 26-T	1
3	460.33.013.000	LOSRAD 3.GANG 31-Z	IDLER GEAR 3RD GEAR 31-T	1
4	460.33.014.000	LOSRAD 4.GANG 30-Z	IDLER GEAR 4TH GEAR 30-T	1
5	460.33.015.000	SCHIEBERAD 5.GANG 28-Z	SLIDING GEAR 5TH GEAR 28-T	1
6	460.33.016.000	LOSRAD 1.GANG 37-Z	IDLER GEAR 1ST GEAR 37-T	1
7	460.33.002.000	ABTRIEBSWELLE	COUNTER SHAFT	1
8	460.33.001.000	ANTRIEBSWELLE 13-Z	MAIN SHAFT 13-T	1
9	460.33.007.000	LOSRAD 5.GANG 23-Z	IDLER GEAR 5TH 23-T	1
10	460.33.008.000	SCHIEBERAD 3/4.GANG 21/18-Z	SLIDING GEAR 3RD/4TH - 21/18-T	1
11	460.33.009.000	LOSRAD 6.GANG 24-Z	IDLER GEAR 6TH GEAR 24-T	1
12	460.33.010.000	FESTRAD 2.GANG 16-Z	SOLID GEAR 2ND GEAR 16-T	1
15	460.33.029.012	KETTENRITZEL 12-Z 60/65 '98	SPROCKET 12-T 60/65 '98	1
15	460.33.029.013	KETTENRITZEL 13-Z 60/65	SPROCKET 13-T 60/65	X
16	460.33.030.000	DISTANZBÜCHSE KETTENRITZEL	DISTANCE BUSHING SPROCKET	1
17	460.33.031.000	O-RING 18,77X1,78	O-RING 18,77X1,78	1
18	0760 263570	WELLENDICHTRING 26X35X7 B	SHAFT SEAL RING 26X35X7 B	1
19	460.33.028.000	RILLENKUGELLAGER 20X42X12	GROOVED BALL BEARING 20X42X12	1
20	490.33.091.000	SEEGERRING AS20X1,75	CIRCLIP AS20X1,75	4
24	490.33.013.000	ANLAUFSCHIEBE 12,1X25X1	STOP DISK 12,1X25X1	2
25	460.33.026.000	NADELLAGER NK12/12A 12X19X12	NEEDLE BEARING NK12 12X19X12	2
28	460.33.022.000	SICHERUNGSRING SW=17X1,2	CIRCLIP WS=17X1,2	2
29	460.33.025.000	RILLENKUGELLAGER SKF98203/C3	GROOVED BALL BEAR.SKF98203/C3	1



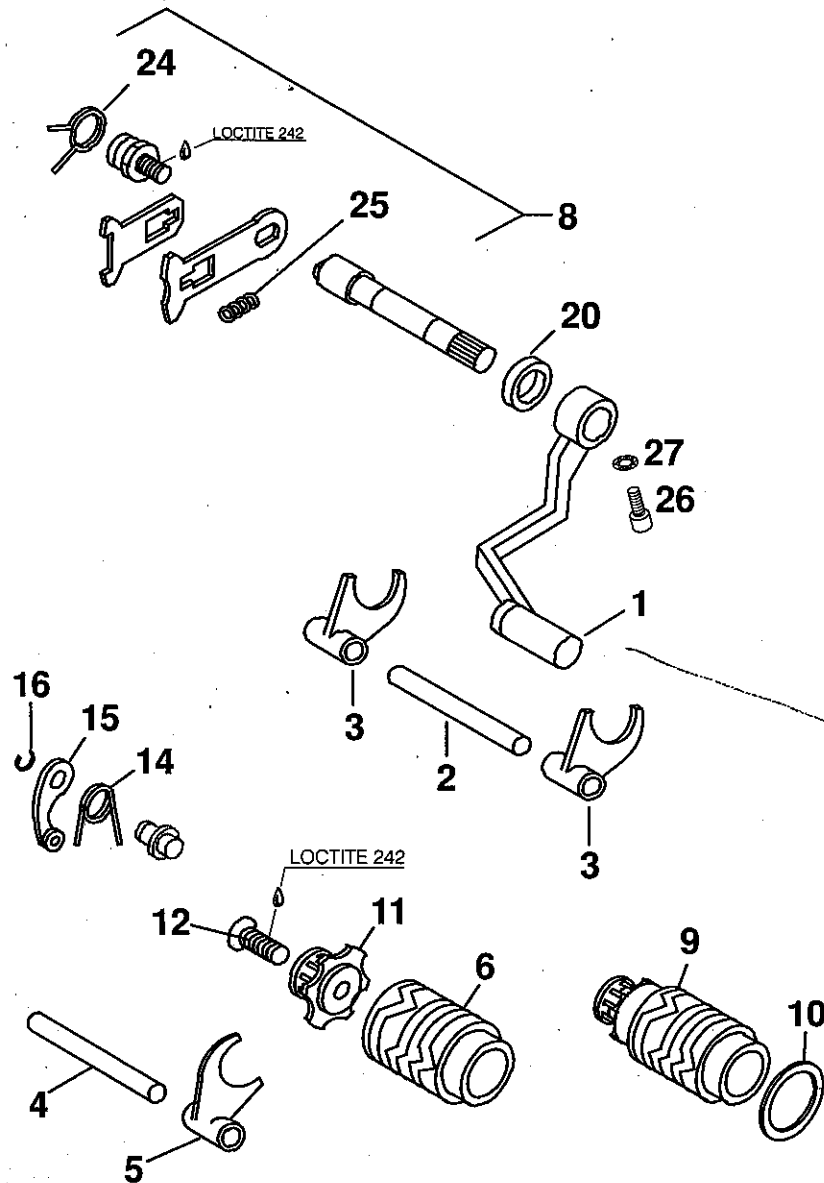
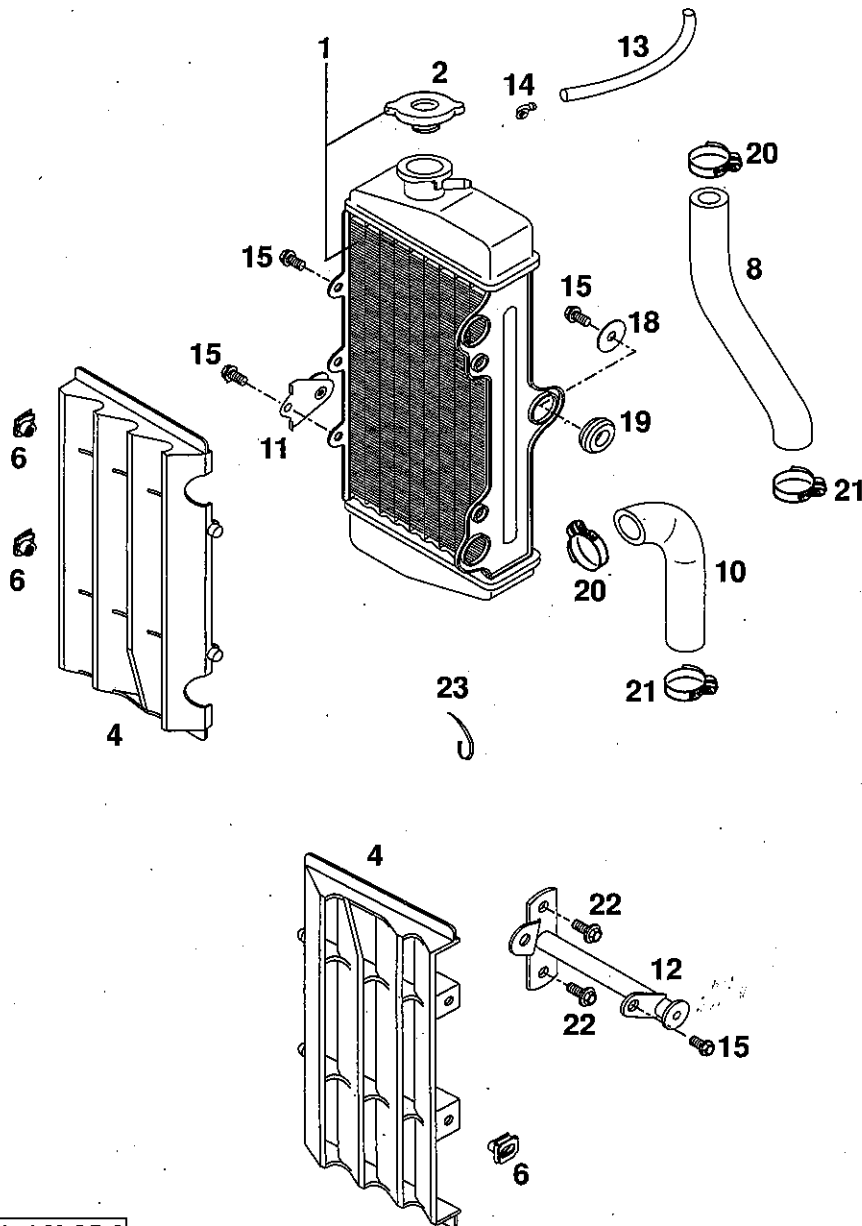


FIG	TEILNR/PARTNR	BEZEICHNUNG	DESCRIPTION	QTY
1	460.34.031.000	SCHALTHEBEL KPL. 60/65 CCM	SHIFTING LEVER CPL. 60/65 CCM	1
2	460.34.020.000	SCHALTSCHIENE 10X83MM	SHIFT RAIL 10X83MM	1
3	460.34.002.000	SCHALTGABEL ABTRIEBSWELLE	SHIFT FORK COUNTERSHAFT	2
4	460.34.019.000	SCHALTSCHIENE 10X72MM	SHIFT RAIL 10X72MM	1
5	460.34.001.000	SCHALTGABEL ANTRIEBSWELLE	SHIFT FORK MAIN SHAFT	1
6	460.34.012.000	SCHALTWALZE	SHIFT ROLLER	1
8	460.34.005.044	SCHALTWELLE KPL.	SHIFT SHAFT CPL.	1
9*	460.34.012.100	SCHALTWALZE KPL. M.ARRETIERUNG	SHIFT ROLLER CPL. W.DRUM LOCAT.	1
10*	460.34.091.000	DISTANZSCHEIBE 30X38	SPACER WASHER 30X38	X
11	460.34.015.000	SCHALTARRETIERUNG	SHIFT DRUM LOCATING	1
12	0991 060303	SENKSCHRAUBE DIN7991-M 6X30	FLAT HEAD SCREW DIN7991-M 6X30	1
14	460.34.023.000	ARRETIERHEBELFEDER	LOCKING LEVER SPRING	1
15	460.34.024.000	ARRETIERHEBEL KPL.	LOCKING LEVER CPL.	1
16	0799 100000	SICH.SCHEIBE DIN6799-RS10,0	TAB WASHER DIN6799-RS10,0	1
20	0760 122050	WELLENDICHTRING 12X20X5 B	SHAFT SEAL RING 12X20X5 B	1
24	460.34.014.000	RÜCKHOLFEDER	RETURN SPRING	1
25	460.34.009.000	DRUCKFEDER GLEITBLECH	PRESSURE SPRING SLIDER PLATE	1
26	0912 060203	ISK.SCHRAUBE DIN0912-M 6X20	AH SCREW DIN0912-M 6X20	1
27	0797 060003	ZAHNSCHEIBE DIN6797-J 6,4	TOOTH LOCK WASH. DIN6797-A 6,4	1

for steel lever use 490.34.022.000



FIG	TEILNR/PARTNR	BEZEICHNUNG	DESCRIPTION	QTY
1	460.35.008.000	KÜHLER RECHTS (45301) 60/65CCM	RADIATOR R/S (45301) 60/65CCM	1
2	580.35.016.000	KÜHLERVERSCHLUSS KLEIN 1,4 BAR	RADIATOR CAP SMALL 1,4 BAR	1
4	545.35.034.000	KÜHLERSCHUTZ LI.KURZ 60165	RADIATOR PROTECTOR L/S 60165	2
6	502.35.033.300	KLIPS-MUTTERNHALTER M6 KP142	SNAP-NUT HOLDER M6 KP142	3
8	460.35.025.000	FORMSCHLAUCH 18X25 LANG	PREFORMED HOSE 18X25 LONG	1
10	460.35.026.000	FORMSCHLAUCH 18X25 KURZ	PREFORMED HOSE 18X25 SHORT	1
11	460.08.153.000	HALTER FÜR SPOILER RECHTS	BRACKET FOR SPOILER R/S	1
12	460.08.053.000	HALTER FÜR SPOILER LINKS	BRACKET FOR SPOILER L/S	1
13	550.07.016.001	SCHLÄUCH 7X10 PER METER	PVC-HOSE 7X10 PER METER	0,13
14	503.03.089.000	WINKELSTÜCK '97	ANGEL PIECE '97	1
15	0015 060123	SK.BUNDSCHRAUBE M 6X12 SW=8	HH COLLAR SCREW M 6X12 WS=8	6
18	0021 060003	SCHEIBE DIN9021-A 6,4	WASHER DIN9021-A 6,4	3
19	410.01.052.000	KABELTÜLE D=12MM	RUBBER SLEEVE D=12MM	3
20	100.01.020.000	SCHLAUCHKLEMME GEMI 16/27	HOSE CLAMP GEMI 16/27	2
21*	100.01.020.100	SCHLAUCHKLEMME GEMI 12/22	HOSE CLAMP GEMI 12/22	2
22	0014 060153	SK.BUNDSCHRAUBE M 6X15 SW=8	HH COLLAR SCREW M 6X15 WS=8	2
23	440.11.076.200	KABELBAND 200MM	CABLE TIE 200MM	X
—	440.11.076.305	KABELBAND 290MM	CABLE TIE 290MM	X



**MOTOTECH**  
MOTORCYCLE TECHNOLOGY



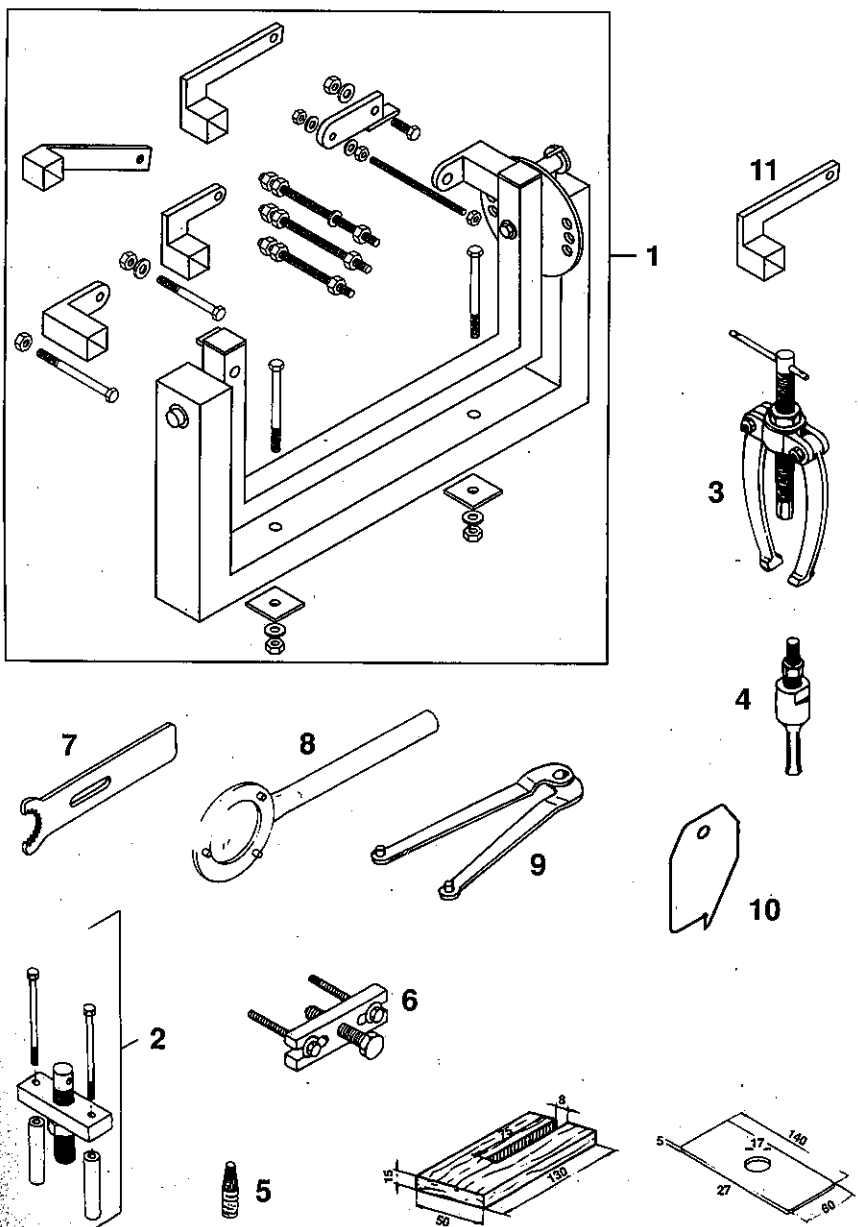


FIG	TEILNR/PARTNR	BEZEICHNUNG	DESCRIPTION	QTY
1	560.12.001.000	UNIVERSALMONTAGEBOCK '96	UNIVERSAL MOUNTING RACK '96	1
2	491.12.008.000	AUSRÜCK-EINZIEHVORRICHTUNG	MOUNTING TOOL	1
3	151.12.017.000	LAGERAUSZIEHER	BEARING EXTRACTOR	1
4	151.12.018.000	EINSATZ 12-16 MM	INTERN.BEAR.PULLER 12-16 MM	1
5	6 899 785	LOCTITE 242 BLAU 6CCM	LOCTITE 242 BLUE 6CCM	1
6	160.12.005.000	ABZIEHER	EXTRACTOR	1
7	490.12.004.000	HALTER FÜR PRIMÄRRAD	HOLDER FOR PRIMARY WHEEL	1
8	490.12.003.000	KUPPLUNGSHALTER	CLUTCH HOLDER	1
9	151.12.021.000	HALTESCHLÜSSEL FÜR SCHWUNGRAD	HOLDING WRENCH FOR ROTOR	1
10	460.29.022.000	EINSTELLBLECH FÜR ZÜNDUNG	SHEET METAL CONTROL FIGNITION	1
11	460.29.002.000	MOTORHALTER FÜR 60/65 CCM	ENGINE BRACKET FOR 60/65 CCM	1