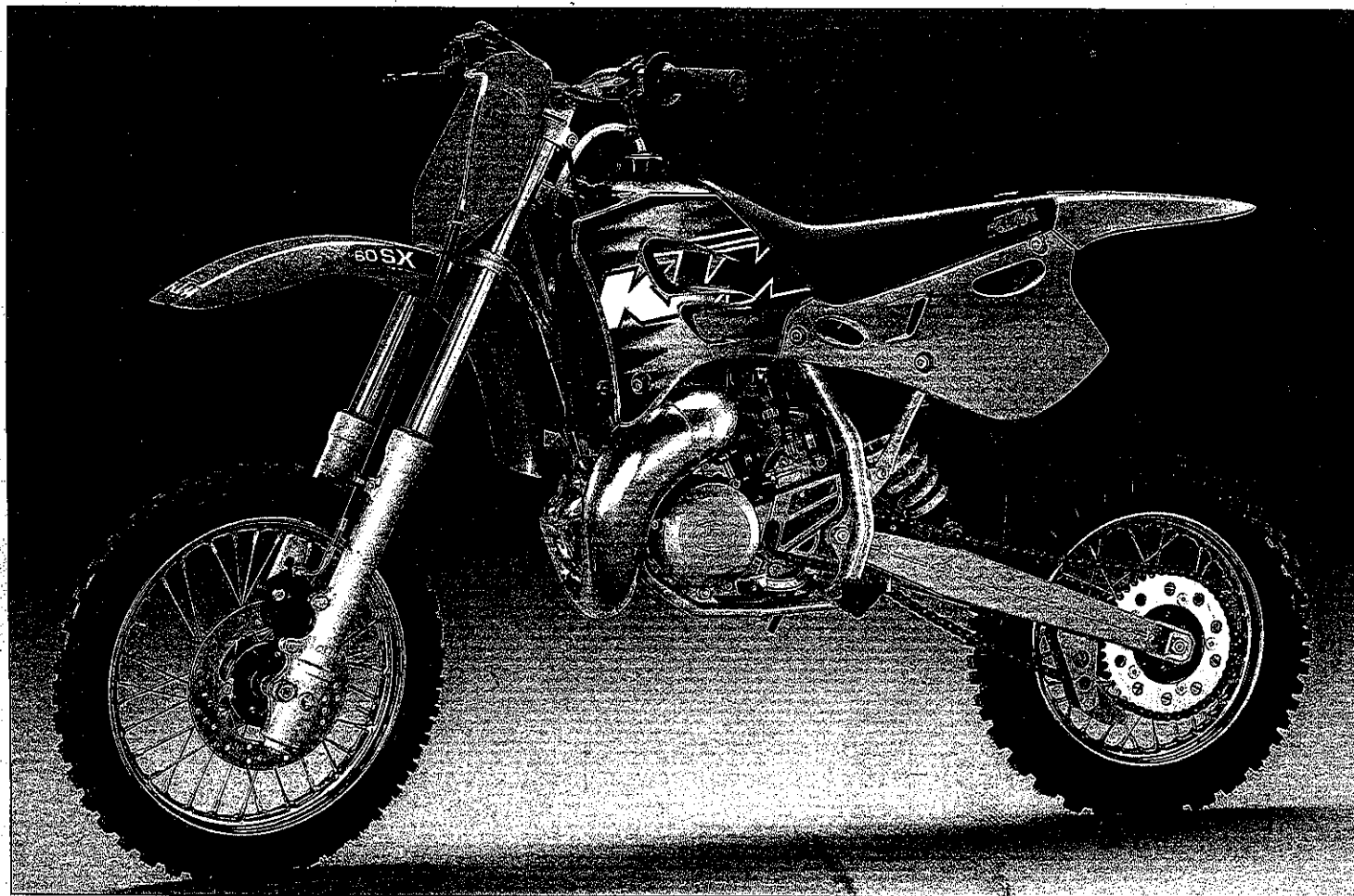


# KTM

# ERSATZTEILKATALOG 1999 SPARE PARTS MANUAL



# 60 65 SX

## FAHRGESTELL / CHASSIS

ART. NR. 3.204.62

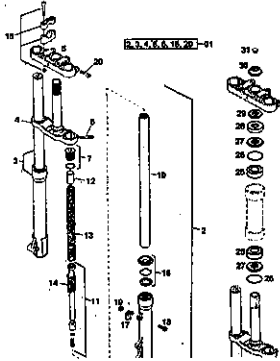
**MOTOTECH**  
MOTORCYCLE TECHNOLOGY



# INHALTSVERZEICHNIS

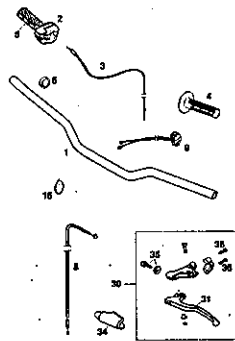
# INDEX

## TELEGABEL PAIOLI FRONT FORK PAIOLI



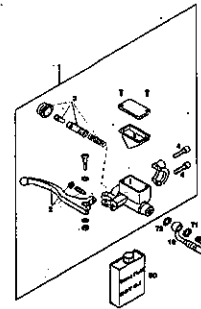
SEITE  
Page  
**3**

## LENKER, ARMATUREN HANDLEBAR, CONTROLS



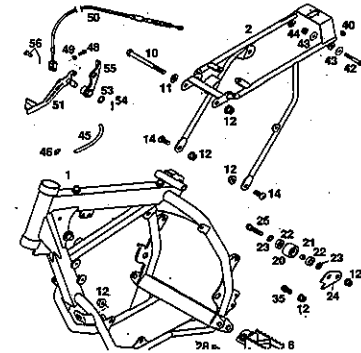
SEITE  
Page  
**4**

## HANDBREMSZYLINDER GRIMECA HAND BRAKE CYLINDER GRIMECA



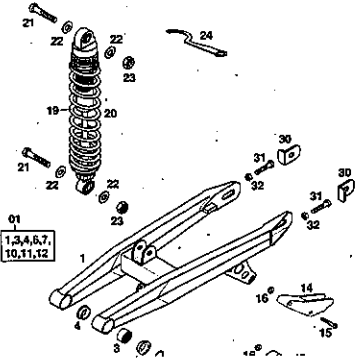
SEITE  
Page  
**5**

## RAHMEN, AUSLEGER FRAME, SUB FRAME



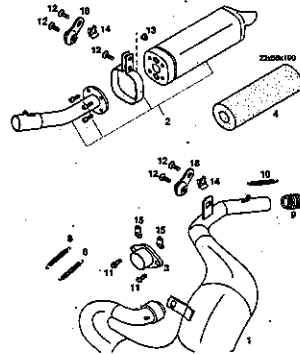
SEITE  
Page  
**6**

## SCHWINGARM, FEDERBEIN SWINGARM, SHOCK ABSORBER



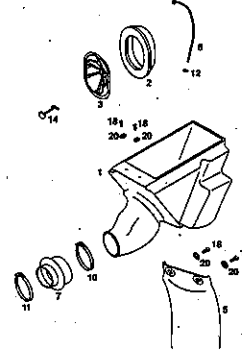
SEITE  
Page  
**7**

## AUSPUFFANLAGE EXHAUST SYSTEM



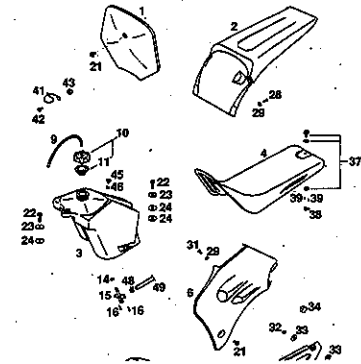
SEITE  
Page  
**8**

## LUFTFILTERKASTEN AIR FILTER BOX



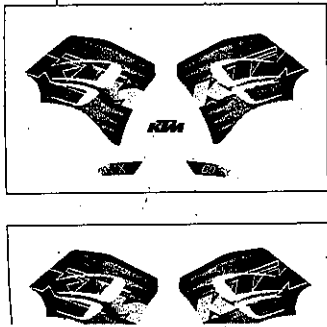
SEITE  
Page  
**9**

## TANK, VERKLEIDUNG TANK, COVER



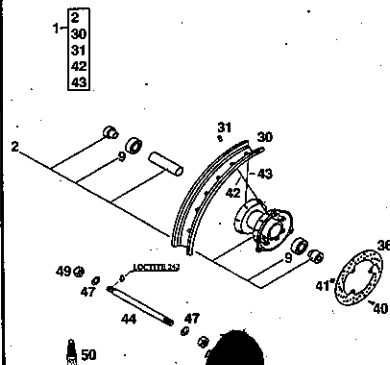
SEITE  
Page  
**10**

## DEKOR. DECAL



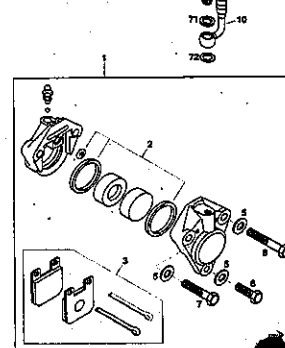
SEITE  
Page  
**11**

## VORDERRAD FRONT WHEEL



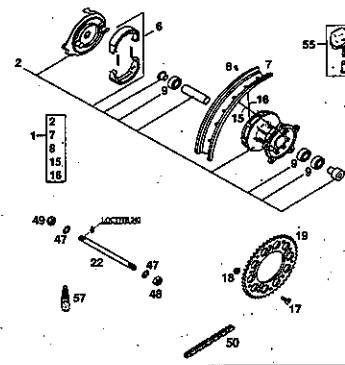
SEITE  
Page  
**12**

## BREMSZANGE VORNE BRAKE CALIPER FRONT



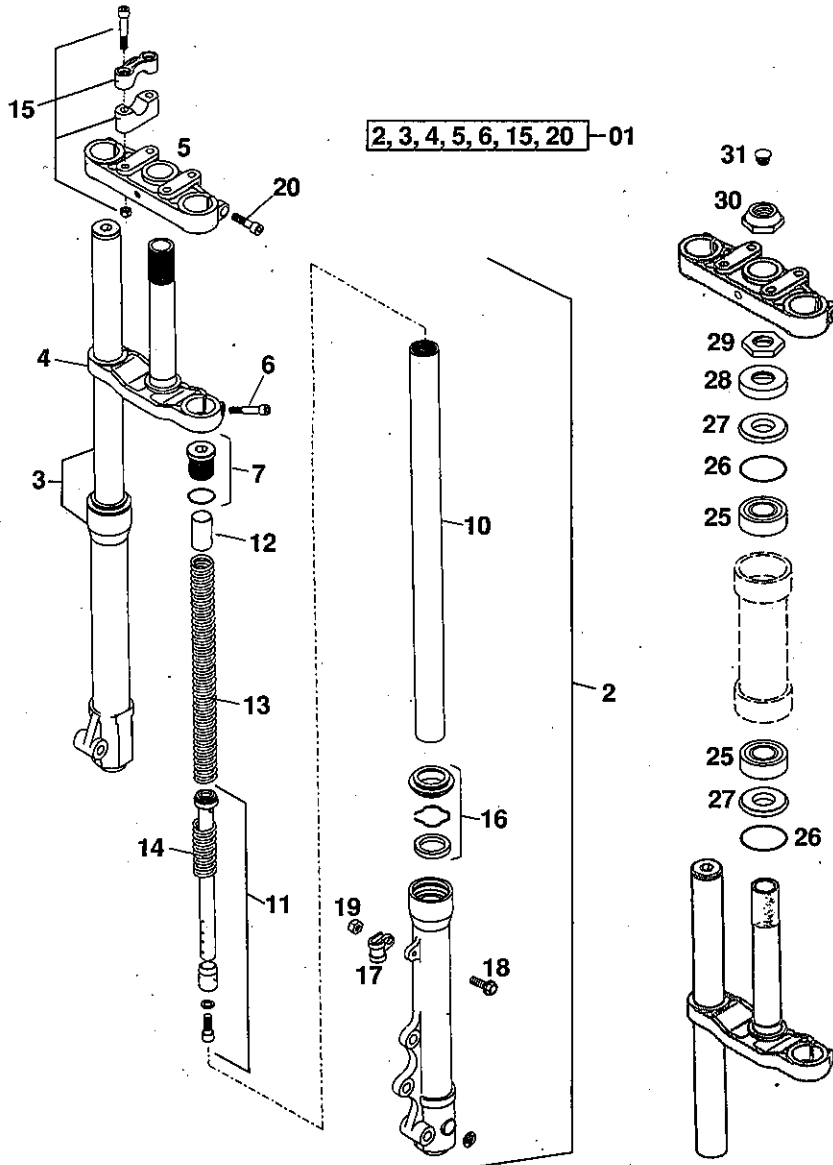
SEITE  
Page  
**13**

## HINTERRAD REAR WHEEL



SEITE  
Page  
**14**

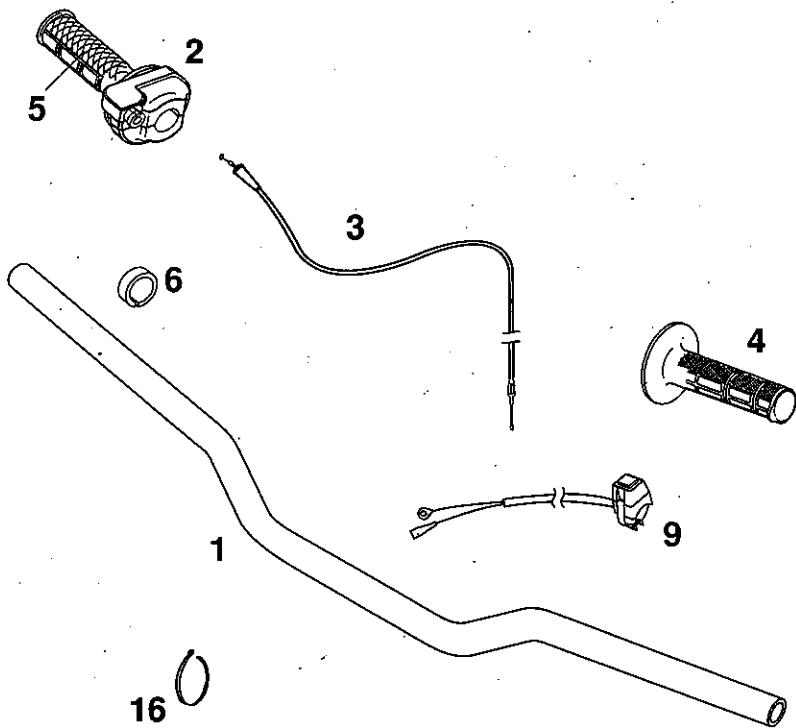




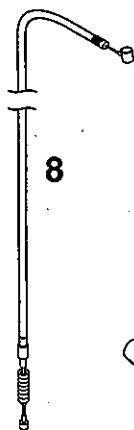
| FIG | TEILNR/PARTNR  | BEZEICHNUNG                   | DESCRIPTION                   | QTY |
|-----|----------------|-------------------------------|-------------------------------|-----|
| 01* | 460.01.000.144 | GABEL KPL. D=32MM L=730MM '99 | FORK CPL. D=32MM L=730MM '99  | 1   |
| 2*  | 460.01.001.100 | GABELBEIN LINKS KPL. '99      | FORK LEG L/S CPL. '99         | 1   |
| 3*  | 460.01.002.100 | GABELBEIN RECHTS KPL. '99     | FORK LEG R/S CPL. '99         | 1   |
| 4   | 460.01.032.014 | GABELBRÜCKE UNTEN KPL. X=14MM | BOT. TRIPLE CLAMP CPL. X=14MM | 1   |
| 5   | 460.01.034.014 | GABELBRÜCKE OBEN X=14MM.      | TOP TRIPLE CLAMP X=14MM       | 1   |
| 6   | 0912 080253    | ISK.SCHRAUBE DIN0912-M 8X25   | AH SCREW DIN0912-M 8X25       | 2   |
| 7   | 450.01.008.000 | VERSCHLUSSKAPPE KPL.          | SCREW CAP CPL.                | 2   |
| 10  | 460.01.003.000 | GABELHOLM D=32MM              | FORK TUBE D=32MM              | 2   |
| 11* | 460.01.010.100 | REP.SATZ KPL. GABEL 60/65 '99 | REP. SET CPL. FORK 60/65 '99  | 2   |
| 12  | 460.01.022.000 | VORSPANNBÜCHSE L=80MM         | PRE LOAD BUSH L=80MM          | 2   |
| 13  | 450.01.021.000 | DRUCKFEDER                    | SPRING                        | 2   |
| 14  | 450.01.050.000 | FEDER-RÜCKANSCHLAG            | SPRING                        | 2   |
| 15  | 450.01.038.044 | LENKERKLEMMBRÜCKE KPL.        | HANDLEBAR CLAMP CPL.          | 1   |
| 16  | 450.01.014.000 | DICHTUNGSSATZ                 | SEAL KIT                      | 2   |
| 17  | 450.01.070.000 | BREMSEILFÜHRUNG               | BRAKE CABLE GUIDE             | 1   |
| 18  | 0015 050163    | SK.BUNDSCHRAUBE M 5X16 SW=8   | HH COLLAR SCREW M 5X16 WS=8   | 1   |
| 19  | 0985 050003    | SS.MUTTER DIN0985-M 5         | SELF LOCKING NUT DIN0985-M 5  | 1   |
| 20  | 0912 080303    | ISK.SCHRAUBE DIN0912-M 8X30   | AH SCREW DIN0912-M 8X30       | 2   |
| 25  | 490.01.081.000 | KEGELROLLENLAGER 32004X       | TAPERED ROLLER BEARING 32004X | 2   |
| 26  | 0770 360030    | O-RING 36,00X3,00             | O-RING 36,00X3,00             | 2   |
| 27  | 460.01.086.000 | SCHUTZRING STEUERK. 20,1X39X5 | PROTECTION RING 20,1X39X5     | 2   |
| 28  | 490.01.086.000 | ABDECKKAPPE                   | COVERING CAP                  | 1   |
| 29  | 460.01.043.000 | STEUERKOPFMUTTER M20X1,5      | STEERING HEAD NUT M20X1,5     | 1   |
| 30  | 460.01.042.000 | KONUSMUTTER M20X1,5           | CONE NUT M20X1,5              | 1   |
| 31  | 550.09.086.000 | VERSCHLUSSPFROPFEN SFL13      | PLUG SFL13                    | 1   |



| FIG | TEILNR/PARTNR  | BEZEICHNUNG                    | DESCRIPTION                    | QTY |
|-----|----------------|--------------------------------|--------------------------------|-----|
| 1*  | 460.02.001.200 | LENKER ALU 60/65 SX '99        | HANDLEBAR ALU 60/65 SX '99     | 1   |
| 2   | 460.02.010.000 | GASDREHGRIF KPL. DOMINO 60/65  | THROTTLE TWIST GRIP CPL. 60/65 | 1   |
| 3   | 460.02.091.000 | GASSEIL 60/65 SX '98           | THROTTLE CABLE 60/65 SX '98    | 1   |
| 4   | 502.02.052.000 | FESTGRIF DOMINO SCHWARZ '95    | FIXED GRIP DOMINO BLACK '95    | 1   |
| 5   | 502.02.003.000 | DREHGRIFÜBERZUG DOMINO SCHW.   | TWIST GRIP COVER DOMINO BLACK  | 1   |
| 6   | 460.02.012.000 | DISTANZBÜCHSE 21,5X28X7,5      | SPACER BUSHING 21,5X28X7,5     | 1   |
| 8*  | 460.02.090.100 | KUPPLUNGSSEIL 60/65 SX '99     | CLUTCH CABLE 60/65 SX '99      | 1   |
| 9   | 503.11.089.100 | KURZSCHLUSSSCHALTER 50 SXR '97 | SHORT CIRCUIT BUTTON 50 SXR'97 | 1   |
| 16  | 440.11.076.100 | KABELBAND 100MM                | CABLE TIE 100MM                | X   |
| —   | 440.11.076.200 | KABELBAND 200MM                | CABLE TIE 200MM                | X   |
| —   | 440.11.076.305 | KABELBAND 290MM                | CABLE TIE 290MM                | X   |
| 30* | 460.02.040.100 | KUPPLUNGSH. KPL. 60/65 SX '99  | CLUTCH LEVER CPL. 60/65 SX '99 | 1   |
| 31* | 460.02.042.100 | KUPPLUNGSH. LOSE 60/65 SX '99  | CLUTCH LEVER LOOSE 60/65SX '99 | 1   |
| 34  | 460.02.048.000 | SCHUTZKAPPE FÜR KUPPLUNGHEBEL  | PLASTIC CAP FOR CLUTCH LEVER   | 1   |
| 35  | 460.02.043.000 | STELLSCHRAUBE KUPPLUNGHEBEL    | ADJUST SCREW CLUTCH LEVER      | 1   |
| 36  | 0015 060203    | SK.BUNDSCHRAUBE M 6X20 SW=8    | HH COLLAR SCREW M 6X20 WS=8    | 2   |



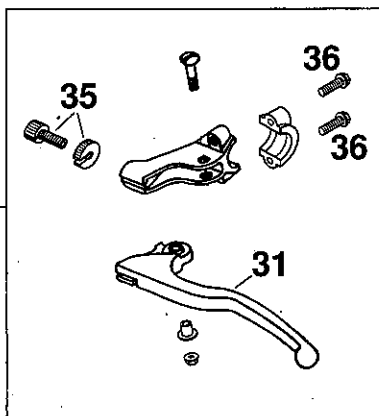
16



8



34

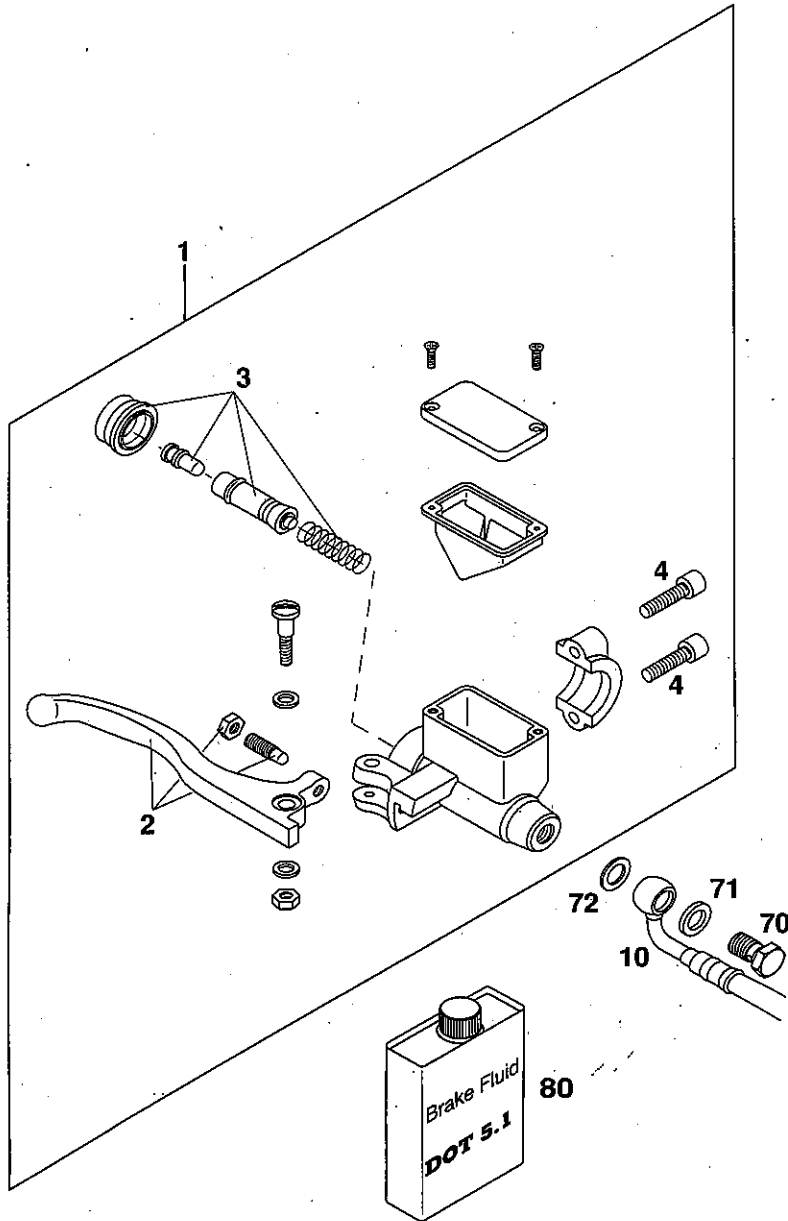


30

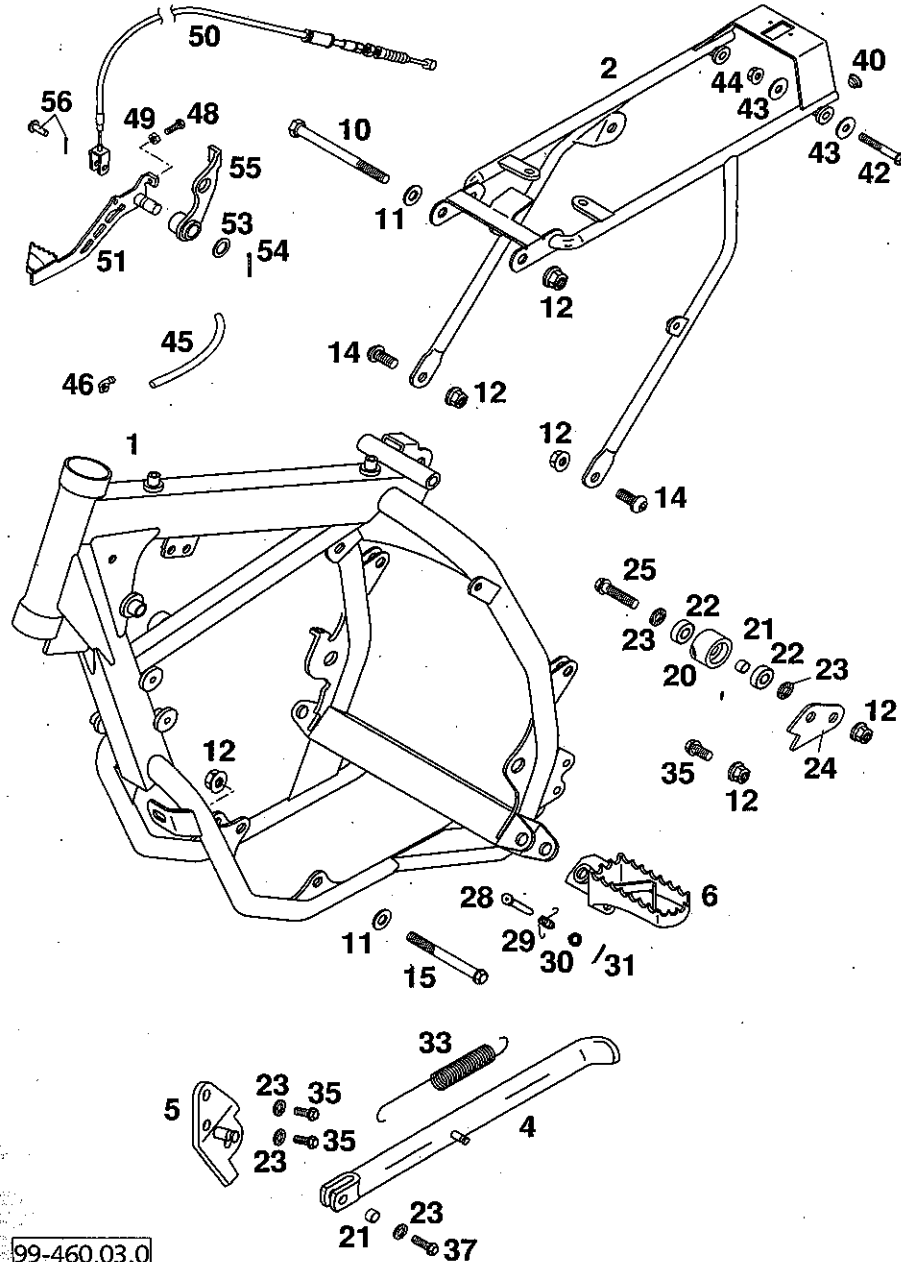
35

36

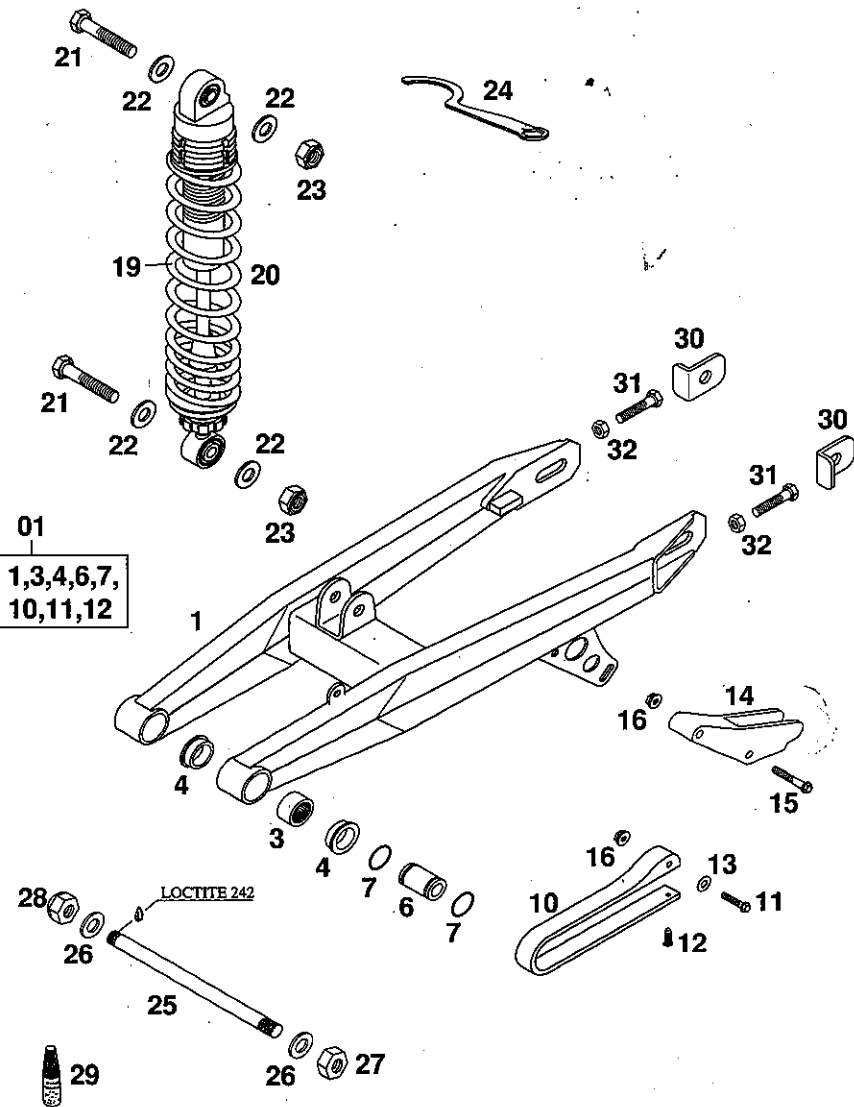
31



| FIG | TEILNR/PARTNR  | BEZEICHNUNG                    | DESCRIPTION                    | QTY |
|-----|----------------|--------------------------------|--------------------------------|-----|
| 1   | 460.13.001.000 | HANDBREMSZYL. GRIMECA 60/65'98 | HAND BRAKE CYLINDER GRIMECA'98 | 1   |
| 2   | 460.13.002.000 | HANDBREMSHEBEL LOSE GRIMECA    | HAND BRAKE LEVER LOOSE GRIMECA | 1   |
| 3   | 460.13.008.000 | REP. SATZ KOLBEN HANDBREMSZYL. | REP. KIT PISTON HANDBRAKE CYL. | 1   |
| 4   | 0912.060253    | ISK.SCHRAUBE DIN0912-M 6X25    | AH SCREW DIN0912-M 6X25        | 2   |
| 10  | 460.13.010.000 | BREMSSCHLAUCH VORNE 825MM '98  | BRAKE HOSE FRONT 825MM '98     | 1   |
| 70  | 502.13.025.000 | HÖHLSCHRAUBE M10X1X19          | HOLLOW SCREW M10X1X19          | 1   |
| 71  | 420.13.026.000 | CU-DICHTRING DIN7603-10X16X1,5 | CU-SEAL RING DIN7603-10X16X1,5 | 1   |
| 72  | 420.13.226.000 | CU-DICHTRING DIN7603-10X16X1   | CU-SEAL RING DIN7603-10X16X1   | 1   |
| 80  | 306054         | BREMSSFLÜSSIGKEIT DOT 5.1      | BRAKE FLUID DOT 5.1            | 1   |



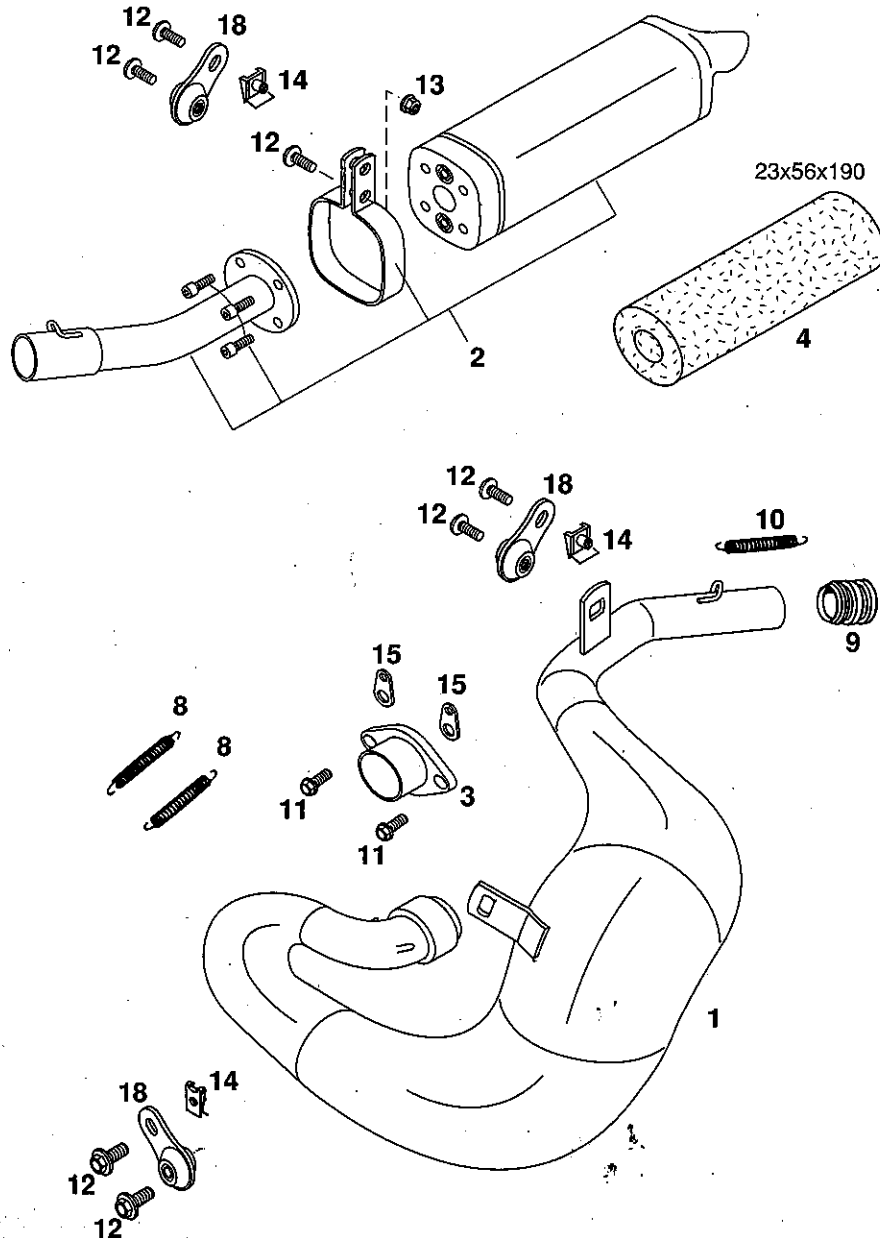
| FIG | TEILNR/PARTNR     | BEZEICHNUNG                    | DESCRIPTION                    | QTY  |
|-----|-------------------|--------------------------------|--------------------------------|------|
| 1*  | 460.03.001.100    | RAHMEN 60/65 SX '99            | FRAME 60/65 SX '99             | 1    |
| 2   | 460.03.002.000    | AUSLEGER 60/65 SX '98          | SUB FRAME 60/65 SX '98         | 1    |
| 4   | 460.03.023.000    | SEITENSTÄNDER L=315MM 60/65 SX | SIDE STAND L=315MM 60/65 SX    | 1    |
| 5*  | 460.03.024.100    | STÄNDERKONSOLE 60/65 SX '99    | SIDE STAND BRACKET 60/65 SX'99 | 1    |
| 6   | 546.03.040.000/90 | FUSSRASTE LINKS SILBER         | FOOT REST L/S SILVER           | 1    |
| -   | 546.03.140.000/90 | FUSSRASTE RECHTS SILBER        | FOOT REST R/S SILVER           | 1    |
| 10  | 0931 081003       | SK.SCHRAUBE DIN0931-M 8X100    | HH SCREW DIN0931-M 8X100       | 1    |
| 11  | 0125 080003       | UNTERLEGSCHIBE DIN0125-A 8,4   | WASHER DIN0125-A 8,4           | 3    |
| 12  | 543.10.086.000    | STOVERFLANSCHMUTTER M8         | SELF LOCKING NUT M8            | 7    |
| 14  | 0107 080203       | ISK.LI.SCHRAUBE DIN0107-M 8X20 | AH OVAL H.SCREW DIN0170-M 8X20 | 2    |
| 15  | 0931 080803       | SK.SCHRAUBE DIN0931-M 8X80     | HH SCREW DIN0931-M 8X80        | 2    |
| 20  | 502.03.053.000    | KETTENROLLE D=30MM             | CHAIN ROLL D=30MM              | 1    |
| 21  | 740.03.021.000    | BÜCHSE 8 X 12 X 6,5            | BUSHING 8 X 12 X 6,5           | 2    |
| 22  | 0625 006087       | RILLENKUGELLAGER 608 2RS C3    | GROOVED BALL BEAR. 608 2RS C3  | 2    |
| 23  | 360.03.014.000    | SCHNORR-SICHERUNGSSCHIBE 8MM   | LOCK WASHER 8MM                | 5    |
| 24* | 460.03.062.000    | HALTER FÜR KETTENROLLE 60SX'99 | BRACKET FOR CHAIN ROLL 60SX'99 | 1    |
| 25  | 0015 080353       | SK.BUNDSCHRAUBE M 8X35 SW=10   | HH COLLAR SCREW M 8X35 WS=10   | 1    |
| 28  | 546.03.044.000    | BOLZEN FÜR FUSSRASTER 9,8 X 50 | BOLT FOR FOOTREST 9,8 X 50     | 2    |
| 29  | 546.03.041.000    | FUSSRASTENFEDER LINKS & RECHTS | FOOTREST SPRING L/S & R/S      | 2    |
| 30  | 0125 080003       | UNTERLEGSCHIBE DIN0125-A 8,4   | WASHER DIN0125-A 8,4           | 2    |
| 31  | 0094 032253       | SPLINT DIN0094-3,2X25 STAHL    | PIN DIN0094-3,2X25 STEEL       | 2    |
| 33  | 510.03.021.000    | STÄNDERFEDER LANG              | SIDESTAND SPRING LONG          | 1    |
| 35  | 0015 080163       | SK.BUNDSCHRAUBE M 8X16 SW=10   | HH COLLAR SCREW M 8X16 WS=10   | 3    |
| 37  | 0015 080203       | SK.BUNDSCHRAUBE M 8X20 SW=10   | HH COLLAR SCREW M 8X20 WS=10   | 1    |
| 40  | 502.10.086.000    | ABDECKKAPPE SFL16              | COVERING CAP SFL16             | 2    |
| 42  | 0015 060453       | SK.BUNDSCHRAUBE M 6X45 SW=8    | HH COLLAR SCREW M 6X45 WS=8    | 2    |
| 43  | 0021 060003       | SCHEIBE DIN9021-A 6,4          | WASHER DIN9021-A 6,4           | 4    |
| 44  | 565.09.064.000    | STOVER-FLANSCHMUTTER M6        | SELF LOCKING NUT M6            | 2    |
| 45  | 550.07.016.001    | SCHLAUCH 7X10 PER METER        | PVC-HOSE 7X10 PER METER        | 0,25 |
| 46  | 503.03.089.000    | WINKELSTÜCK '97                | ANGEL PIECE '97                | 1    |
| 48  | 0933 050163       | SK.SCHRAUBE DIN0933-M 5X16     | HH SCREW DIN0933-M 5X16        | 1    |
| 49  | 0934 050003       | SK.MUTTER DIN0934-M 5          | HEXAGON NUT DIN0934-M 5        | 1    |
| 50  | 460.13.070.000    | BREMSEIL HINTEN 60/65 SX '98   | BRAKE CABLE REAR 60/65 SX '98  | 1    |
| 51* | 460.03.060.100    | FUSSBREMSHEBEL KPL.60/65 SX'99 | BRAKE LEVER CPL. 60/65 SX '99  | 1    |
| 53  | 0988 121805       | PASSCHIBE DIN0988-12X18X0,50   | SHIM WASHER DIN0988-12X18X0,50 | 1    |
| 54  | 0094 020200       | SPLINT DIN0094-2,0X20 STAHL    | PIN DIN0094-2,0X20 STEEL       | 1    |
| 55  | 460.03.061.000    | FUSSBREMSTRÄGERBLECH '98       | FOOTBRAKE CARRIER METAL SHEET  | 1    |
| 56  | 310.11.093.000    | BOLZEN MIT SPLINT              | BOLT WITH PIN                  | 1    |



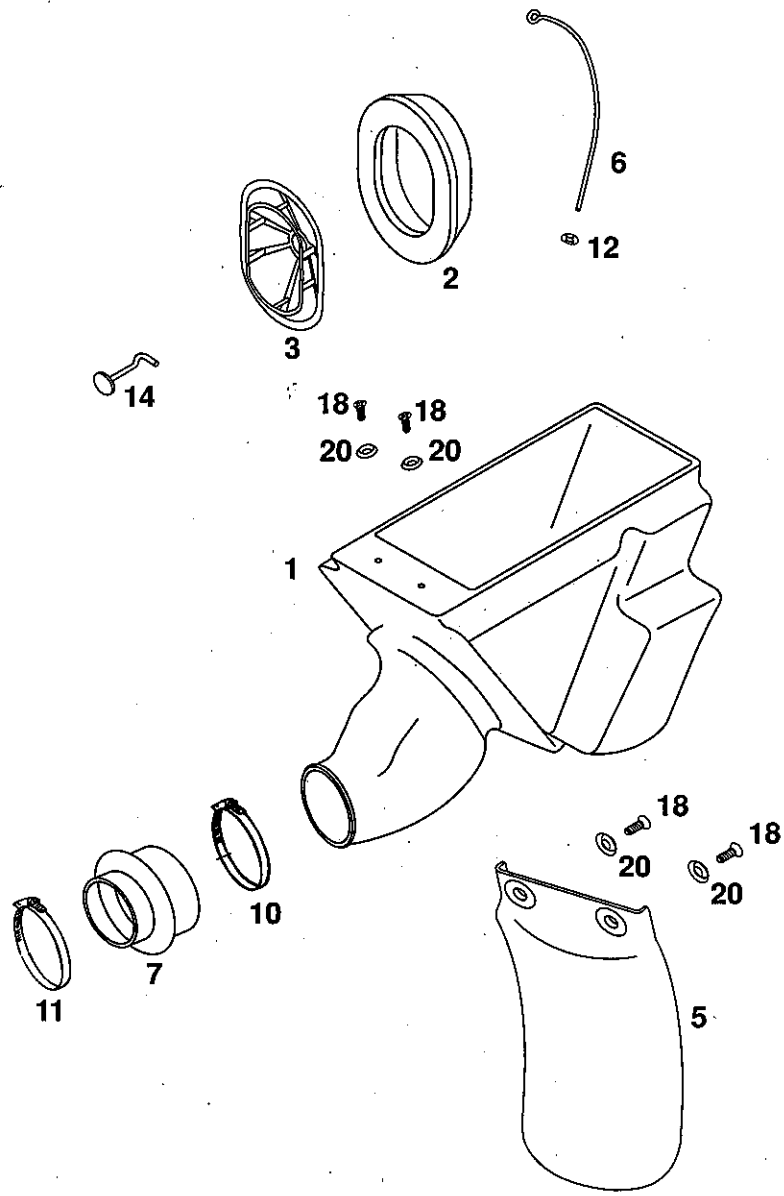
| FIG | TEILNR/PARTNR  | BEZEICHNUNG                    | DESCRIPTION                    | QTY |
|-----|----------------|--------------------------------|--------------------------------|-----|
| 01* | 460.04.030.144 | SCHWINGARM KPL. 60/65 CCM '99  | SWINGARM CPL. 60/65 CCM '99    | 1   |
| 3   | 546.03.097.000 | NADELHÜLSE HK 2016             | NEEDLE BUSH HK 2016            | 2   |
| 4   | 460.04.030.070 | DISTANZBÜCHSE 20X26X30X9,7     | PACER BUSHING 20X26X30X9,7     | 4   |
| 6   | 460.04.030.071 | LAGERBÜCHSE 12X20X36,5         | BEARING BUSH 12X20X36,5        | 2   |
| 7   | 0770 160021    | O-RING 16,00X2,00 VITON        | O-RING 16,00X2,00 SILICON      | 4   |
| 10* | 460.04.066.000 | KETTENGLEITSCHUTZ 60/65 SX '99 | CHAIN GUIDE FRONT 60/65 SX '99 | 1   |
| 11  | 0015 060303    | SK.BUNDSCHRAUBE M 6X30 SW=8    | HH COLLAR SCREW M 6X30 WS=8    | 1   |
| 12  | 0982 550163    | SENKBL.SCHR. DIN7982- 5,5X16   | SHEET MET.SCR.DIN7982- 5,5X16  | 1   |
| 13  | 530.02.046.000 | SCHEIBE 6,4X14X0,8             | WASHER 6,4X14X0,8              | 1   |
| 14  | 460.07.066.000 | KETTENFÜHRUNG HINTEN 60/65 '98 | CHAIN GUIDE REAR 60/65 '98     | 1   |
| 15  | 0015 060403    | SK.BUNDSCHRAUBE M 6X40 SW=8    | HH COLLAR SCREW M 6X40 WS=8    | 2   |
| 16  | 565.09.064.000 | STOVER-FLANSCHMUTTER M6        | SELF LOCKING NUT M6            | 3   |
| 19* | 460.04.011.040 | FEDER 215MM 4,0KG              | SPRING 215MM 4,0KG             | X   |
| 19* | 460.04.011.048 | FEDER 222MM 4,8KG              | SPRING 222MM 4,8KG             | X   |
| 20* | 460.04.010.100 | FEDERBEIN PAIOLI MC48 60/65'99 | MONOSHOCK PAIOLI MC48 60/65'99 | 1   |
| 21  | 0931 100453    | SK.SCHRAUBE DIN0931-M10X45     | HH SCREW DIN0931-M10X45        | 2   |
| 22  | 0125 100003    | UNTERLEGSCHLEIBE DIN0125-A10,5 | WASHER DIN0125-A10,5           | 4   |
| 23  | 0985 100003    | SS.MUTTER DIN0985-M10          | SELF LOCKING NUT DIN0985-M10   | 2   |
| 24  | 460.12.024.000 | HAKENSCHLÜSSEL FÜR FEDERBEIN   | HOOK WRENCH FOR SHOCK ABSORBER | 1   |
| 25  | 460.04.037.000 | SCHWINGARMBOLZEN 201MM M12X1   | SWINGARM BOLT 201MM M12X1      | 1   |
| 26  | 0125 120003    | UNTERLEGSCHLEIBE DIN0125-A13   | FLAT WASHER DIN0125-A13        | 2   |
| 27  | 0934 120103    | SK.MUTTER DIN0934-M12X1        | HEXAGON NUT DIN0934-M12X1      | 1   |
| 28* | 0917 120103    | HUTMUTTER DIN917-M12X1         | NUT DIN917-M12X1               | 1   |
| 29  | 6 899 785      | LOCTITE 242 BLAU 6CCM          | LOCTITE 242 BLUE 6CCM          | 1   |
| 30  | 460.10.083.000 | KETTENSCHNUR 60/65 '98         | CHAIN ADJUSTER 60/65 '98       | 2   |
| 31  | 0933 060303    | SK.SCHRAUBE DIN0933-M 6X30     | HH SCREW DIN0933-M 6X30        | 2   |
| 32  | 0934 060003    | SK.MUTTER DIN0934-M 6          | HEXAGON NUT DIN0934-M 6        | 2   |





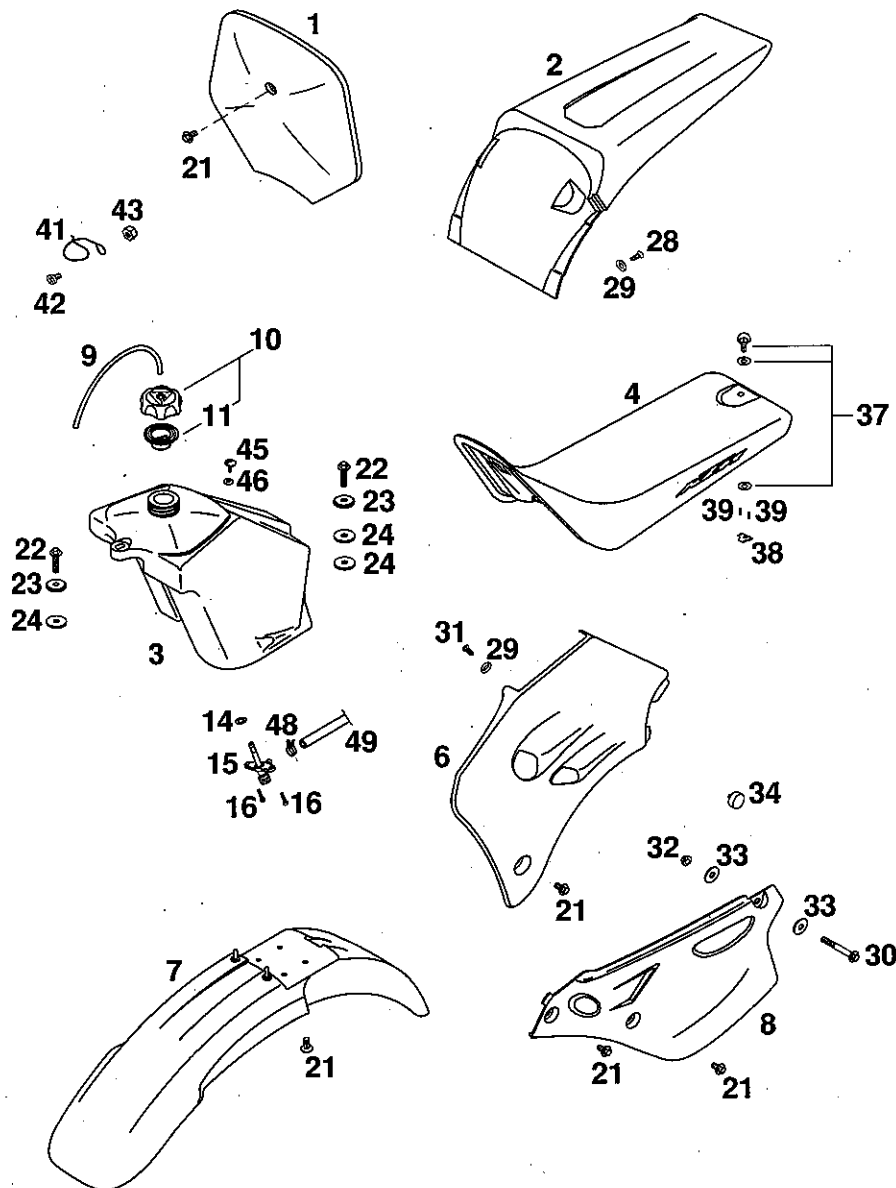


| FIG | TEILNR/PARTNR  | BEZEICHNUNG                    | DESCRIPTION                    | QTY |
|-----|----------------|--------------------------------|--------------------------------|-----|
| 1*  | 460.05.007.100 | AUSPUFF NICKEL 60/65 SX '99    | EXHAUST PIPE CHROME 60/65SX'99 | 1   |
| 2   | 460.05.079.000 | ENDDÄMPFER 60/65 SX '98        | SILENCER 60/65 SX '98          | 1   |
| 3*  | 460.36.040.000 | AUSPUFFSTUTZEN 60/65 SX '99    | EXHAUST FLANGE 60/65 SX '99    | 1   |
| 4   | 580.05.079.056 | GLASFASERGARN LOOSE 300 GRAMM  | STUFFING YARN LOOSE 300 GRAMM  | 1   |
| 8   | 543.09.036.000 | ZUGFEDER L=38MM                | RETURN SPRING L=38 MM          | 2   |
| 9*  | 546.05.057.000 | GUMMIMUFFE D=21/23MM '93       | RUBBER SLEEVE D=21MM/23MM '93  | 1   |
| 10* | 503.05.016.000 | ZUGFEDER L=55MM ÖSEN BEWEGLICH | TENSION SPRING L=55MM          | 1   |
| 11  | 0015 060163    | SK.BUNDSCHRAUBE M 6X16 SW=8    | HH COLLAR SCREW M 6X16 WS=8    | 2   |
| 12  | 0014 060153    | SK.BUNDSCHRAUBE M 6X15 SW=8    | HH COLLAR SCREW M 6X15 WS=8    | 7   |
| 13  | 565.09.064.000 | STOVER-FLANSCHMUTTER M6        | SELF LOCKING NUT M6            | 1   |
| 14  | 546.03.048.100 | MEHRBEREICHSBLECHMUTTER M6     | RANGE CHANGE METAL NUT M6      | 3   |
| 15  | 510.05.074.000 | FEDERLASCHE                    | RETAINING PLATE                | 2   |
| 18  | 503.05.012.000 | SCHWINGELEMENT FÜR AUSPUFF '98 | SWINGELEMENT FOR EX.PIPE '98   | 3   |



| FIG | TEILNR/PARTNR  | BEZEICHNUNG                    | DESCRIPTION                    | QTY |
|-----|----------------|--------------------------------|--------------------------------|-----|
| 1   | 460.06.001.000 | FILTERKASTEN 60/65 SX '98      | FILTER BOX 60/65 SX '98        | 1   |
| 2   | 584.06.015.100 | FILTERELEMENT E-STARTER '98    | FILTERELEMENT E-STARTER '98    | 1   |
| 3   | 584.06.016.000 | FILTERTRÄGER '97               | FILTER CARRIER '97             | 1   |
| 5   | 460.06.010.000 | SPRITZSCHUTZ 60/65 SX '98      | SPLASH PROTECTOR 60/65 SX '98  | 1   |
| 6   | 460.06.017.000 | HALTEBÜGEL FÜR FILTER 60/65 SX | HOLDING HANGER FOR FILTER      | 1   |
| 7   | 460.06.026.000 | VERGASERMANNSCHETTE 60/65 SX   | CARBURETOR CONNECTING BOOT     | 1   |
| 10  | 460.05.058.000 | SCHLAUCHBINDER 40-60MM NORMA   | HOSE CLAMP 40-60MM NORMA       | 1   |
| 11  | 450.07.027.000 | SCHLAUCHBINDER 32-50MM B=5MM   | HOSE CLAMP 32-50MM W=5MM       | 1   |
| 12  | 546.06.019.004 | KLEMMSCHEIBE KS4               | CLAMPING DISK KS4              | 1   |
| 14  | 584.06.017.050 | HAKEN FÜR FILTERHALTEBÜGEL '97 | HOOK FOR HOLDING HANGER FILTER | 1   |
| 18  | 0016 055163    | PLASTITE SCHRAUBE Z 5,5X16     | SPECIAL SCREW Z 5,5X16         | 4   |
| 20  | 400.06.006.000 | FASSONSCHEIBE 6MM              | WASHER 6MM                     | 4   |

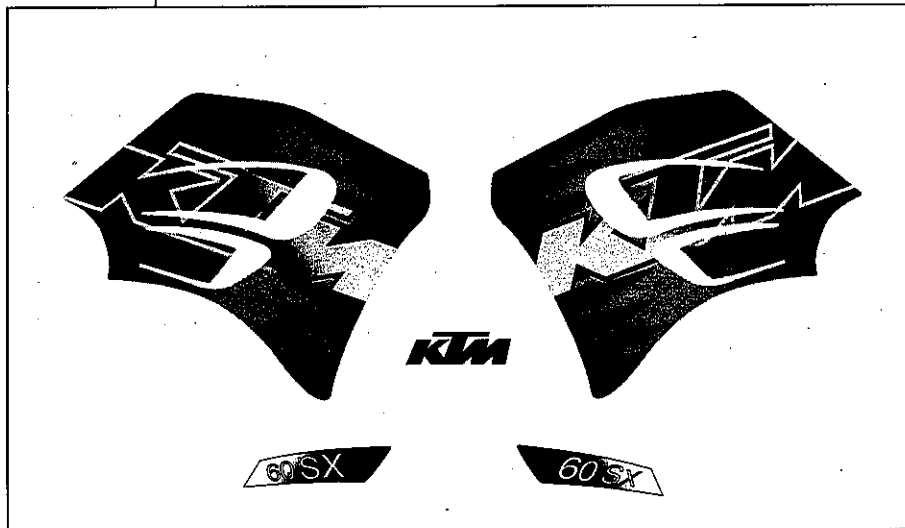




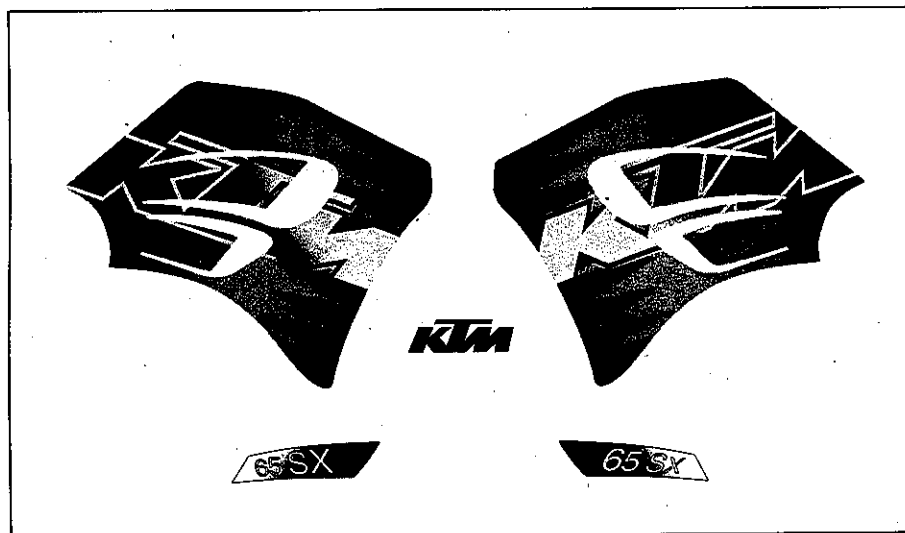
| FIG | TEILNR/PARTNR  | BEZEICHNUNG                    | DESCRIPTION                    | QTY  |
|-----|----------------|--------------------------------|--------------------------------|------|
| 1   | 460.08.007.000 | STARTNUMMERNTAFEL 60/65 SX '98 | START NUMBER PLATE 60/65 SX'98 | 1    |
| 2   | 460.08.013.000 | KOTFLÜGEL HINTEN SILBER 60/65  | FENDER REAR SILVER 60/65       | 1    |
| 3   | 460.07.013.000 | BENZINTANK KPL. SCHWARZ 60/65  | FUEL TANK CPL. BLACK 60/65     | 1    |
| 4   | 460.07.040.000 | SITZBANK SCHWARZ/WEISS 60/65   | SEAT BLACK/WHITE 60/65         | 1    |
| 6   | 460.08.050.000 | SPOILER ORANGE LINKS 60/65 '98 | SPOILER ORANGE L/S 60/65 '98   | 1    |
| -   | 460.08.051.000 | SPOILER ORANGE RECHTS 60/65'98 | SPOILER ORANGE R/S 60/65 '98   | 1    |
| 7   | 460.08.010.000 | KOTFLÜGEL VORNE ORANGE 60/65   | FENDER FRONT ORANGE 60/65      | 1    |
| 8*  | 460.08.041.100 | SEITENVERKL.LI SILBER 60/65'99 | SIDE COVER L/S SILVER 60/65'99 | 1    |
| -*  | 460.08.042.100 | SEITENVERKL.RE SILBER 60/65'99 | SIDE COVER R/S SILVER 60/65'99 | 1    |
| 9   | 310.07.107.001 | PVC-SCHLAUCH 6X9 MM PER METER  | PVC-HOSE 6X9 MM PER METER      | 0,25 |
| 10  | 490.07.008.044 | TANKVERSCHLUSS KPL. KLEIN      | FILLER CAP CPL. SMALL          | 1    |
| 11  | 490.07.009.000 | DICHTUNG FÜR TANKVERSCHLUSS    | GASKET FOR FILLER CAP          | 1    |
| 14  | 550.07.006.200 | O-RING 11X1,8 NBR 70           | O-RING 11X1,8 NBR 70           | 1    |
| 15  | 585.07.003.000 | BENZINHAHN KPL.KLEIN RALLYE'96 | FUEL COCK CPL. SMALL RALLYE'96 | 1    |
| 16  | 0016 050153    | PLASTITE SCHRAUBE Z 5X16       | SPECIAL SCREW Z 5X15           | 2    |
| 21  | 0014 060103    | SK.BUNDSCHRAUBE M 6X10 SW=8    | HH COLLAR SCREW M 6X10 WS=8    | 11   |
| 22  | 0014 060253    | SK.BUNDSCHRAUBE M 6X25 SW=8    | HH COLLAR SCREW M 6X25 WS=8    | 2    |
| 23  | 546.05.069.000 | BÜCHSE 7,5X12X28X7,8 '96       | BUSHING 7,5X12X28X7,8 '96      | 2    |
| 24  | 510.05.067.100 | ISOLIERSCHEIBE 12X28X3         | INSULATE WASHER 12X28X3        | 3    |
| 28  | 0016 055163    | PLASTITE SCHRAUBE Z 5,5X16     | SPECIAL SCREW Z 5,5X16         | 2    |
| 29  | 400.06.006.000 | FASSONSCHRAUBE 6MM             | WASHER 6MM                     | 8    |
| 30  | 0015 060453    | SK.BUNDSCHRAUBE M 6X45 SW=8    | HH COLLAR SCREW M 6X45 WS=8    | 2    |
| 31  | 0991 060163    | SENKSCHRAUBE DIN7991-M 6X16    | FLAT HEAD SCR. DIN7991-M 6X16  | 6    |
| 32  | 565.09.064.000 | STOVER-FLANSCHMUTTER M6        | SELF LOCKING NUT M6            | 2    |
| 33  | 0021 060003    | SCHEIBE DIN9021-A 6,4          | WASHER DIN9021-A 6,4           | 4    |
| 34* | 543.08.042.000 | GUMMIPUFFER                    | RUBBER BUFFER                  | 1    |
| 37  | 450.07.040.051 | SCHNELLVERSCHLUSS KPL.50SXR'97 | QUICK RELEASE CPL. 50 SXR '97  | 1    |
| 38  | 450.07.040.050 | WIDERLAGER SCHNELLVERSCHLUSS   | THRUST BEARING QUICK RELEASE   | 1    |
| 39  | 0011 321000    | BLINDNIETE 3,2X10 ALU          | DUMMY RIVET 3,2X10 ALU         | 2    |
| 41  | 580.11.008.000 | FÜHRUNG FÜR BREMSSCHLAUCH      | GUIDE FOR BRAKE HOSE           | 1    |
| 42  | 0985 050103    | LINSENSCHRAUBE DIN7985-M 5X10  | OVAL HEAD SCR. DIN7985-M 5X10  | 1    |
| 43  | 0985 050003    | SS.MUTTER DIN0985-M 5          | SELF LOCKING NUT DIN0985-M 5   | 1    |
| 45  | 580.07.044.000 | LINSENSCHRAUBE M6X15 250/4T    | OVAL HEAD SCREW M6X15 250/4T   | 1    |
| 46  | 0125 060003    | UNTERLEGSCHRAUBE DIN0125-A 6,4 | WASHER DIN0125-A 6,4           | 1    |
| 48  | 580.31.005.000 | YDNAC KLAMMER 10128            | CLAMP YDNAC 10128              | 2    |
| 49  | 580.07.016.001 | BENZINSCHLAUCH VITON           | FUEL HOSE VITON                | 0,1  |

\* = NEUTEIL / NEW PART X = NACH BEDARF / AS REQUIRED

1

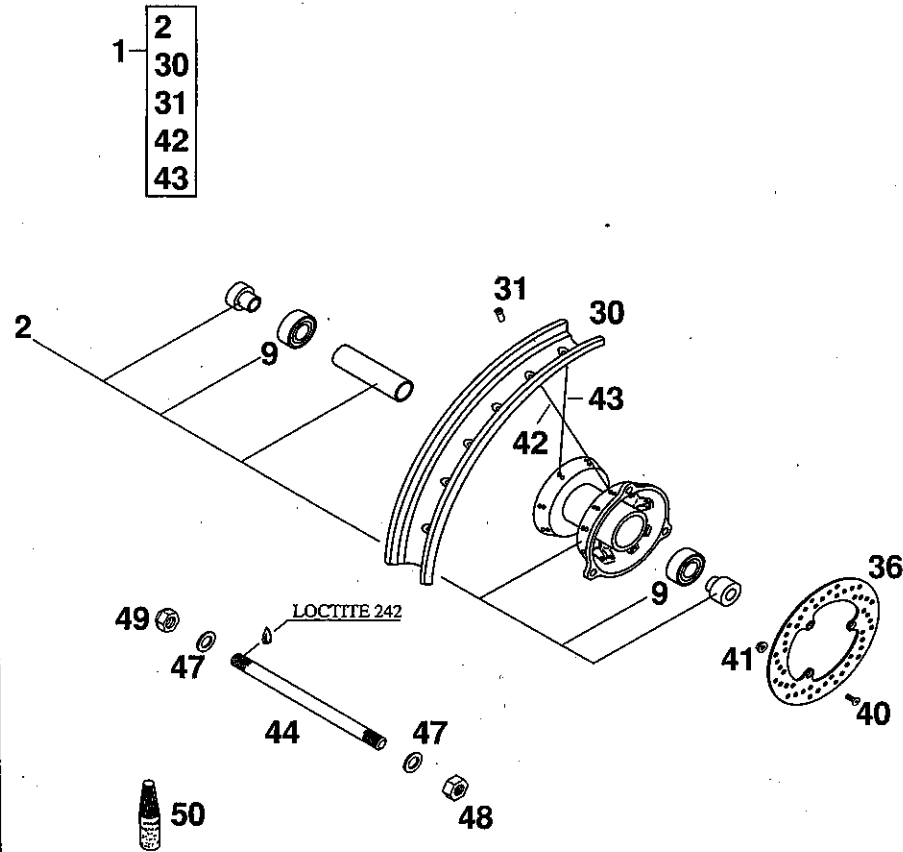


| FIG | TEILNR/PARTNR  | BEZEICHNUNG     |     | DESCRIPTION     |     | QTY |
|-----|----------------|-----------------|-----|-----------------|-----|-----|
| 1*  | 460.07.098.300 | DEKORSATZ 60 SX | '99 | DECAL SET 60 SX | '99 | 1   |
| 2*  | 460.07.098.200 | DEKORSATZ 65 SX | '99 | DECAL SET 65 SX | '99 | 1   |



2

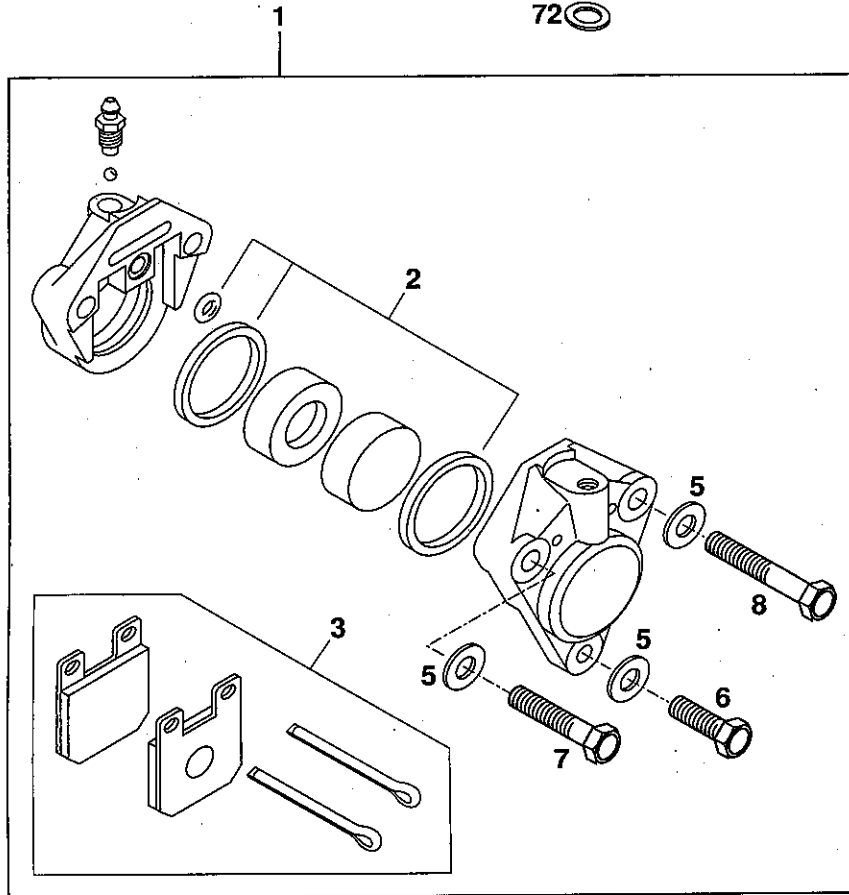
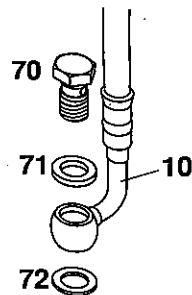
| FIG | TEILNR/PARTNR  | BEZEICHNUNG                   | DESCRIPTION                     | QTY |
|-----|----------------|-------------------------------|---------------------------------|-----|
| 1   | 460.09.001.044 | VORDERRAD KPL. 1,6X14" '98    | FRONT WHEEL CPL. 1,6X14" '98    | 1   |
| 2   | 460.09.010.000 | VORDERRADNABE KPL. SILBER '98 | FRONT WHEEL HUB CPL. SILVER '98 | 1   |
| 9   | 0625 060037    | RILLENKUGELLAGER 6003 2SR C3  | GROOVED BALL BEAR. 6003 2SR C3  | 2   |
| 30  | 460.09.070.000 | FELGE VORNE 1,6X14" ALU       | RIM FRONT 1,6X14" ALU           | 1   |
| 31  | 460.09.072.000 | SPEICHENNIPPEL M3,5           | SPOKE NIPPLE M3,5               | 32  |
| 36  | 460.09.060.000 | BREMSSCHEIBE VORNE 198MM '98  | BRAKE DISK FRONT 198MM '98      | 1   |
| 40  | 0991 060203    | SENKSCHRAUBE DIN7991-M 6X20   | FLAT HEAD SCREW DIN7991-M 6X20  | 3   |
| 41  | 565.09.064.000 | STOVER-FLANSCHMUTTER M6       | SELF LOCKING NUT M6             | 3   |
| 42  | 460.09.071.000 | SPEICHE M3,5X145-15G 14" RE.  | SPOKE M3,5X145-15G 14" R/S      | 16  |
| 43  | 460.09.171.000 | SPEICHE M3,5X147-15G 14" LI.  | SPOKE M3,5X147-15G 14" L/S      | 16  |
| 44  | 460.09.081.000 | STECKACHSE VORNE 194MM M12X1  | AXLE FRONT 194MM M12X1          | 1   |
| 47  | 0125 120003    | UNTERLEGSCHIEBE DIN0125-A13   | FLAT WASHER DIN0125-A13         | 2   |
| 48  | 0934 120103    | SK.MUTTER DIN0934-M12X1       | HEXAGON NUT DIN0934-M12X1       | 1   |
| 49* | 0917 120103    | HUTMUTTER DIN917-M12X1        | NUT DIN917-M12X1                | 1   |
| 50  | 6 899 785      | LOCTITE 242 BLAU 6CCM         | LOCTITE 242 BLUE 6CCM           | 1   |

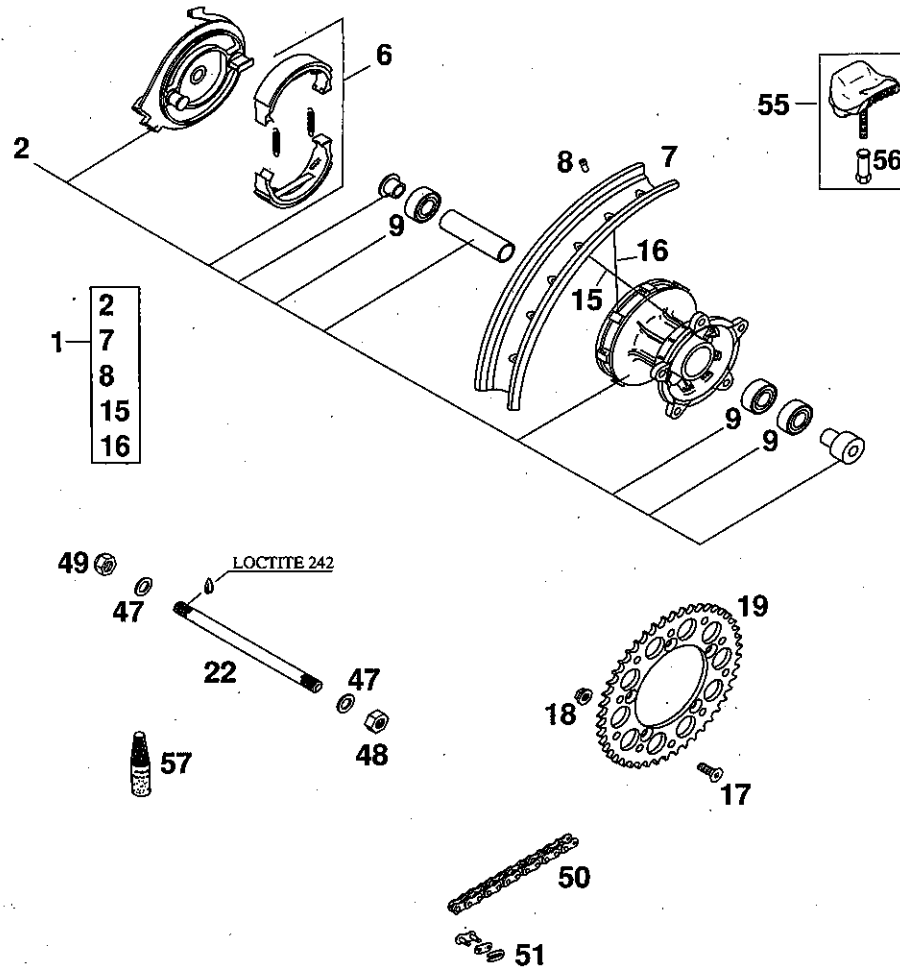


# MOTOTECH

MOTORCYCLE TECHNOLOGY

| FIG | TEILNR/PARTNR  | BEZEICHNUNG                    | DESCRIPTION                    | QTY |
|-----|----------------|--------------------------------|--------------------------------|-----|
| 1   | 460.13.015.000 | BREMSZANGE KPL. VORNE 60/65 SX | BRAKE CALIPER CPL. FRONT 60/65 | 1   |
| 2   | 460.13.019.000 | REP. SATZ. KOLBEN BREMSZANGE   | REP. KIT PISTON BRAKE CALIPER  | 1   |
| 3   | 460.13.016.000 | BREMSKLÖTZE GARN. GRIMECA      | BRAKE PAD SET GRIMECA          | 1   |
| 5   | 0125 080003    | UNTERLEGSCHLEIBE DIN0125-A 8,4 | WASHER DIN0125-A 8,4           | 3   |
| 6   | 0015 080253    | SK.BUNDSCHRAUBE M 8X25 SW=10   | HH COLLAR SCREW M 8X25 WS=10   | 1   |
| 7   | 0015 080403    | SK.BUNDSCHRAUBE M 8X40 SW=10   | HH COLLAR SCREW M 8X40 WS=10   | 1   |
| 8   | 0015 080503    | SK.BUNDSCHRAUBE M 8X50 SW=10   | HH COLLAR SCREW M 8X50 WS=10   | 1   |
| 10  | 460.13.010.000 | BREMSSCHLAUCH VORNE 825MM '98  | BRAKE HOSE FRONT 825MM '98     | 1   |
| 70  | 502.13.025.000 | HOHLSCHRAUBE M10X1X19          | HOLLOW SCREW M10X1X19          | 1   |
| 71  | 420.13.026.000 | CU-DICHRING DIN7603-10X16X1,5  | CU-SEAL RING DIN7603-10X16X1,5 | 1   |
| 72  | 420.13.226.000 | CU-DICHRING DIN7603-10X16X1    | CU-SEAL RING DIN7603-10X16X1   | 1   |





| FIG | TEILNR/PARTNR  | BEZEICHNUNG                   | DESCRIPTION                    | QTY |
|-----|----------------|-------------------------------|--------------------------------|-----|
| 1   | 460.10.001.044 | HINTERRAD KPL. 1,60X12" '98   | REAR WHEEL CPL. 1,60X12" '98   | 1   |
| 2   | 460.10.010.044 | HINTERRADNABE KPL. SILBER '98 | REAR WHEEL HUB CPL. SILVER '98 | 1   |
| 6   | 490.10.035.000 | BREMSBACKEN GARN. HINTEN      | BRAKE SHOES GARN. REAR         | 1   |
| 7   | 460.10.070.000 | FELGE HINTEN 1,6X12" ALU      | RIM REAR 1,6X12" ALU           | 1   |
| 8   | 460.09.072.000 | SPEICHENNIRPEL M3,5           | SPOKE NIPPLE M3,5              | 32  |
| 9   | 0625 060037    | RILLENKUGELLAGER 6003 2SR C3  | GROOVED BALL BEAR. 6003 2SR C3 | 3   |
| 15  | 460.10.071.000 | SPEICHE M3,5X128-20G 12" LI.  | SPOKE M3,5X128-20G 12" L/S     | 16  |
| 16  | 460.10.171.000 | SPEICHE M3,5X139-27G 12" RE.  | SPOKE M3,5X139-27G 12" R/S     | 16  |
| 17  | 0991 080253    | SENKSCHRAUBE DIN7991-M 8X25   | FLAT HEAD SCREW DIN7991-M 8X25 | 5   |
| 18  | 543.10.086.000 | STOVERFLANSCHMUTTER M8        | SELF LOCKING NUT M8            | 5   |
| 19  | 460.10.051.044 | KETTENRAD 44-Z                | REAR SPROCKET 44-T             | X   |
| 19  | 460.10.051.046 | KETTENRAD 46-Z                | REAR SPROCKET 46-T             | 1   |
| 22  | 460.10.085.000 | STECKACHSE HINTEN 207MM M12X1 | AXLE REAR 207MM M12X1          | 1   |
| 47  | 0125 120003    | UNTERLEGSSCHEIBE DIN0125-A13  | FLAT WASHER DIN0125-A13        | 2   |
| 48  | 0934 120103    | SK.MUTTER DIN0934-M12X1       | HEXAGON NUT DIN0934-M12X1      | 1   |
| 49* | 0917 120103    | HUTMUTTER DIN917-M12X1        | NUT DIN917-M12X1               | 1   |
| 50  | 460.10.065.108 | KETTE 1/2X1/4" 108 ROLLEN     | CHAIN 1/2X1/4" 108 ROLLEN      | 1   |
| 51  | 460.10.066.000 | KETTENSCHLOSS 1/2X1/4"        | CHAIN LOCK 1/2X1/4"            | 1   |
| 55  | 510.09.100.100 | REIFENHALTER VM1 (1,60")      | RIM LOCK VM1 (1,60")           | 1   |
| 56  | 503.10.090.050 | MUTTER FÜR REIFENHALTER '96   | NUT WHEEL HOLDER '96           | 1   |
| 57  | 6 899 785      | LOCTITE 242 BLAU 6CCM         | LOCTITE 242 BLUE 6CCM          | 1   |

